

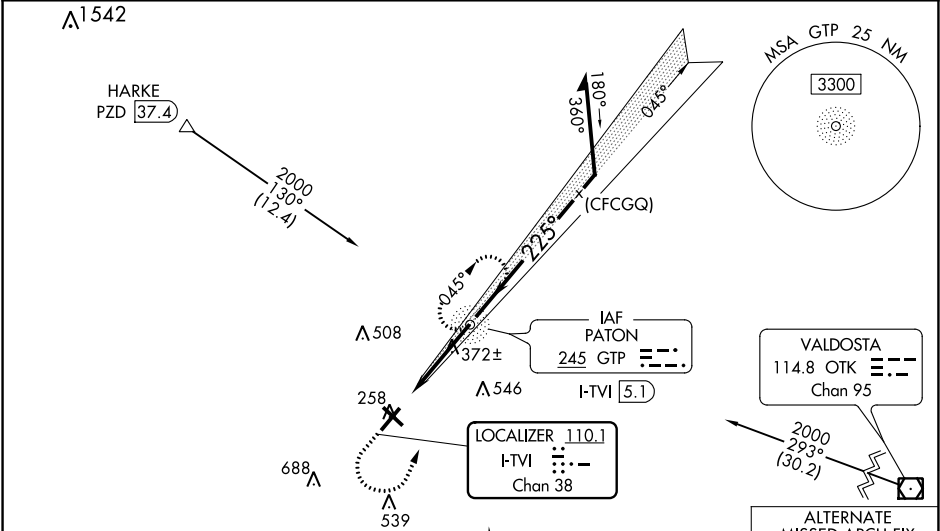
LOC/DME I-TVI <b>110.1</b> Chan <b>38</b>	APP CRS <b>225°</b>	Rwy Idg TDZE <b>242</b> Apt Elev <b>264</b>	ILS or LOC RWY 22 THOMASVILLE RGNL (TVI)
---	------------------------	---	---

**ADF required.** VDP NA with Valdosta altimeter setting. When local altimeter setting not received, use Valdosta altimeter setting and increase DA to 683 feet and all MDA 100 feet. Increase S-ILS 22 all Cats visibility  $\frac{3}{4}$  SM, increase S-LOC 22 and Circling Cats C/D visibility  $\frac{1}{4}$  SM. For inop ALS, increase S-ILS 22 all Cats, and S-LOC 22 Cat D visibility to  $1\frac{1}{2}$  SM. For inop ALS when using Valdosta altimeter setting, increase S-ILS 22 all Cats visibility to  $1\frac{1}{2}$  SM and increase S-LOC 22 Cat D visibility to  $1\frac{1}{2}$  SM. Circling Rwy 4, 14, 32 NA at night.

**MALSF**

Climb to 900 then climbing left turn to 2000 direct GTP NDB and hold.

AWOS-3PT <b>119.175</b>	VALDOSTA APP CON* <b>126.6 285.6</b>	UNICOM <b>123.075 (CTAF)</b>
----------------------------	---	---------------------------------



**ADF REQUIRED**

ELEV 264 TDZE 242

225° 4 NM from FAF

6000 X 100

4599 X 100

0.3° UP

LRL Rwy 14-32  
HIRL Rwy 4-22

FAF to MAP 4 NM

Knots 60 90 120 150 180  
Min:Sec 4:00 2:40 2:00 1:36 1:20

**ALTERNATE MISSED APCH FIX**

VALDOSTA 114.8 OTK Chan 95

← R-270-090° →

900		2000	GTP	GTP NDB I-TVI 5.1	Remain within 10 NM
* LOC only.		I-TVI 1.2	I-TVI 2.3	1568	045°
1.1 NM		2.9 NM	1600	225°	2000
GS 3.00° TCH 59		GS unusable below 600.			
CATEGORY	A	B	C	D	
S-ILS 22	600- $\frac{3}{4}$		358 (400- $\frac{7}{8}$ )		
S-LOC 22	640- $\frac{3}{4}$		398 (400- $\frac{3}{4}$ )		640- $\frac{7}{8}$ 398 (400- $\frac{7}{8}$ )
CIRCLING	700-1 436 (500-1)	800-1 536 (600-1)	900-1 $\frac{3}{4}$ 636 (700-1 $\frac{3}{4}$ )	1040-2 $\frac{1}{2}$ 776 (800-2 $\frac{1}{2}$ )	