

FORT RUCKER, ALABAMA

RNAV (GPS) RWY 36

WAAS CH 63110 W36A	APCH CRS 004°	Rwy Idg TDZE Arpt Elev 5025 298 301
--	-------------------------	---

AL-577 [USA]

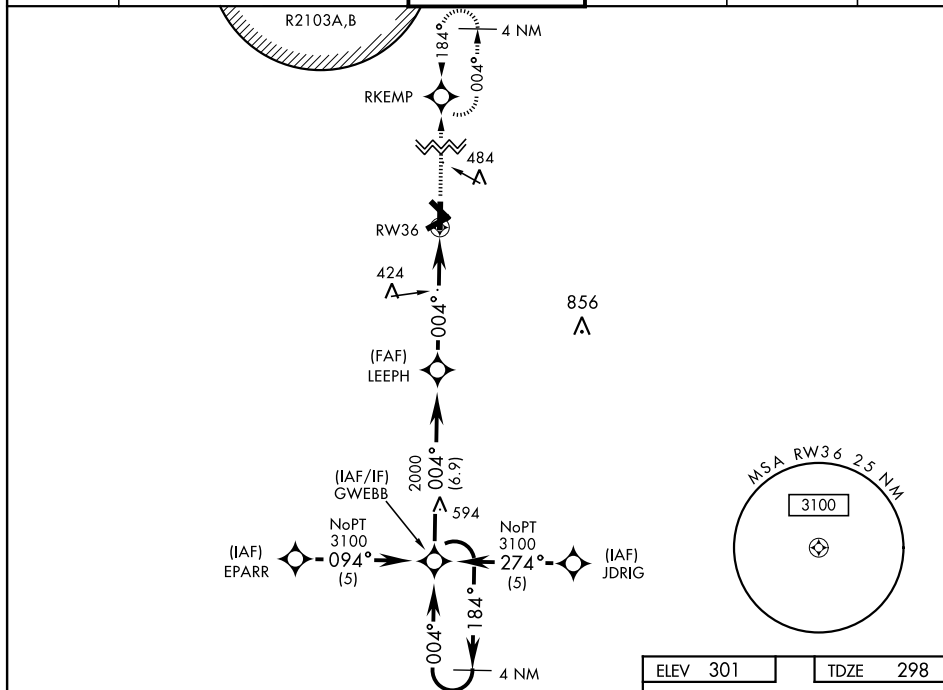
CAIRNS AAF (KOZR)

RADAR required.

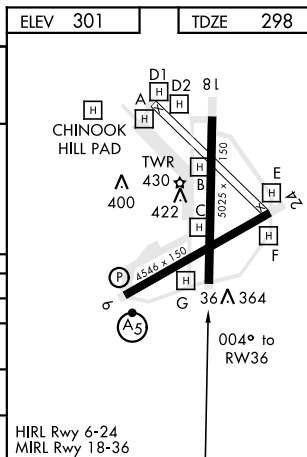
▼ DME/DME RNP-0.3 NA
For uncompensated BARO-VNAV systems, LNAV/VNAV NA
below -15°C (5°F) or above 48°C (118°F).

MISSED APPROACH: Climb to 2000 direct RKEMP and hold.

ATIS 111.2 316.15	CAIRNS APP CON 021°-120° 125.4 327.125 121°-219° 133.75 270.35 220°-340° 133.45 239.275 341°-020° 121.1 319.25	CAIRNS TOWER ★ 135.2 (CTAF) 248.55	GND CON 121.9 288.25	CLNC DEL 118.075 380.1	PAR
---------------------------------------	--	--	--	--	-----



4 NM Holding Pattern GWEBB	†LNAV ONLY				2000	RKEMP
184° 004° 3100 GS 3.00° TCH 50	LEEPH				2000	
†1.1 NM to RWY 36				5.1 NM		
CATEGORY	A	B	C	D		
LPV DA	565-1 267 (300-1)					
LNAV/VNAV DA	634-1¼ 336 (400-1¼)					
LNAV MDA	680-1 382 (400-1)				680-1¼ 382 (400-1¼)	
CIRCLING	780-1 479 (500-1)	820-1 519 (600-1)	860-1½ 559 (600-1½)	900-2 599 (600-2)		



FORT RUCKER, ALABAMA

31° 16' N-85° 43' W

CAIRNS AAF (KOZR)

Orig A 05NOV20

RNAV (GPS) RWY 36

SE-4, 31 DEC 2020 to 28 JAN 2021

SE-4, 31 DEC 2020 to 28 JAN 2021