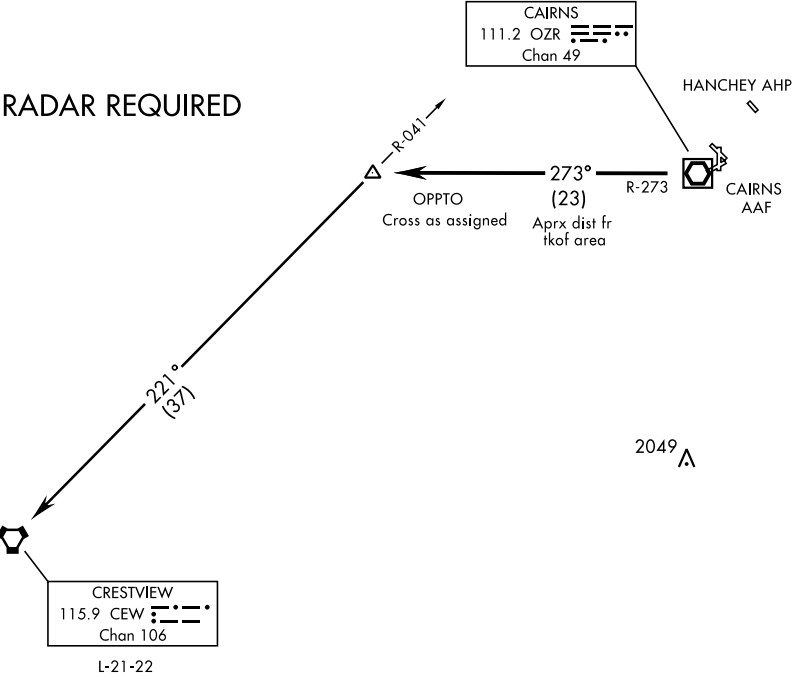


ATIS 111.2 316.15
CLNC DEL
118.075 380.1
GND CON
121.9 288.25
CAIRNS TOWER ★
135.2 (CTAF) 248.55
DEP CON
133.45 239.275
JACKSONVILLE CENTER
120.2 346.4

SL-577 [USA]



DEPARTURE ROUTE DESCRIPTION

TAKE-OFF RWY 6: Climbing left turn heading 270°

TAKE-OFF RWY 18: Climbing right turn heading 205°

TAKE-OFF RWY 24: Climbing right turn heading 300°

TAKE-OFF RWY 36: Climbing left turn heading 270°

TAKE-OFF PAD A: Climb heading 310°

TAKE-OFF PAD D2: Climb heading 360°

Maintain 2000, expect clearance to requested altitude/flight level ten (10) minutes after departure.

Expect Radar vector to intercept OZR VOR/DME R-273 to OPPTO INT. Thence via Transition.

CRESTVIEW TRANSITION: (OPPTO2 • CEW) Turn left via CEW R-041 to CEW VORTAC.