
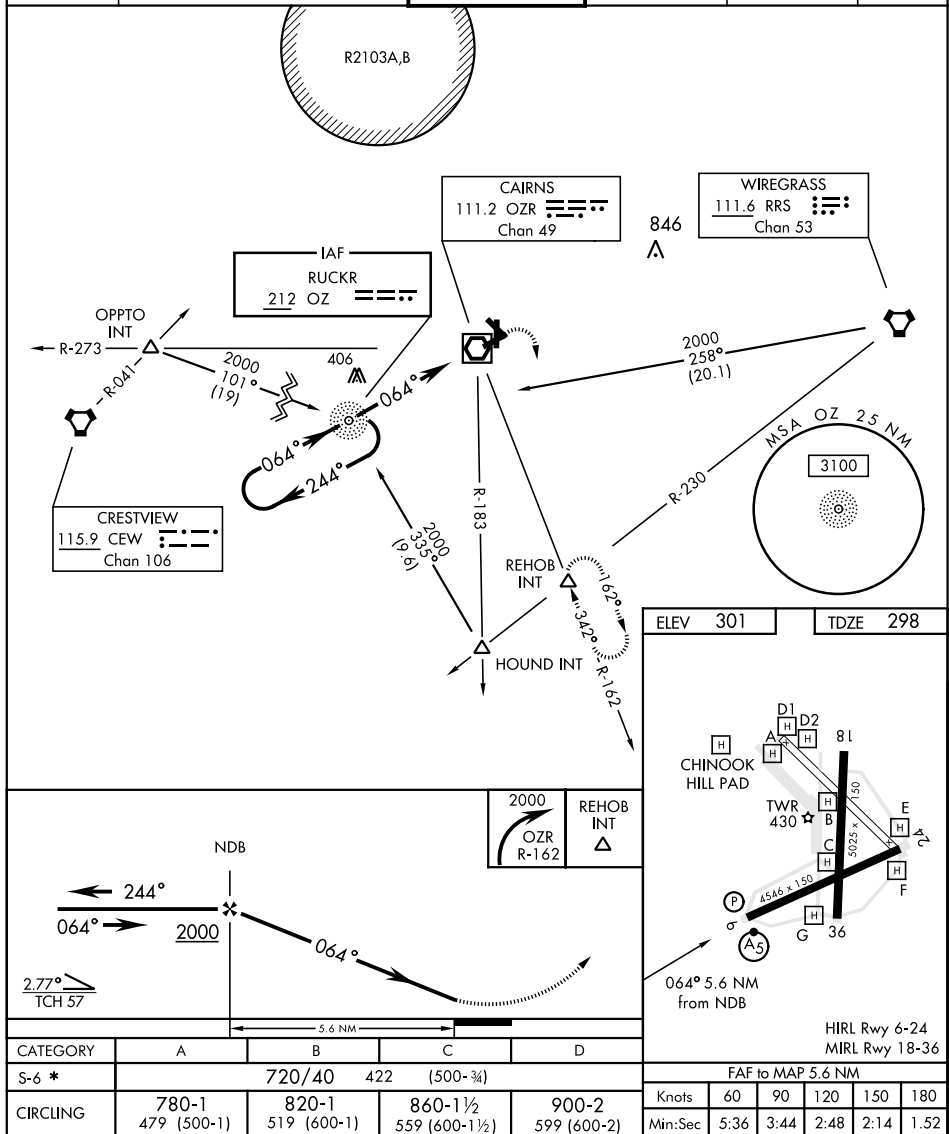


NDB RWY 6

NDB OZ <u>212</u>		APCH CRS 064°		Rwy Idg 4546 TDZE 298 Arpt Elev 301		AL-577 [USA]		CAIRNS AAF (KOZR)		
▼ * When ALS inop, increase CAT AB RVR to 50, visibility to 1 mile; CAT CD RVR to 60, visr to 1¼ miles. Visibility reduction by helicopters NA.						MALSR 		MISSED APPROACH: Climbing right turn to 2000 via OZR VOR/DME R-162 to REHOB INT and hold; or when directed by ATC, climbing left turn to 2000 heading 290° within 10 NM (RADAR required).		
ATIS		CAIRNS APP CON				CAIRNS TOWER ★		GND CON	CLNC DEL	PAR
111.2	125.4	327.125	021°-120°		135.2 (CTAF) 248.55	121.9 288.25	118.075 380.1			
316.15	133.75	270.35	121°-219°							
	133.45	239.275	220°-340°							
	121.1	319.25	341°-020°							



FORT RUCKER, ALABAMA

31° 16' N-85° 43' W

CAIRNS AAF (KOZR)

NDB RWY 6

SE-4, 31 DEC 2020 to 28 JAN 2021

SE-4. 31 DEC 2020 to 28 JAN 2021