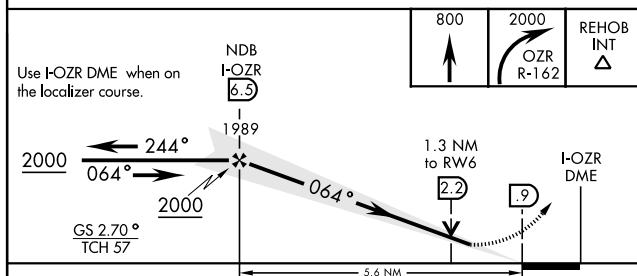
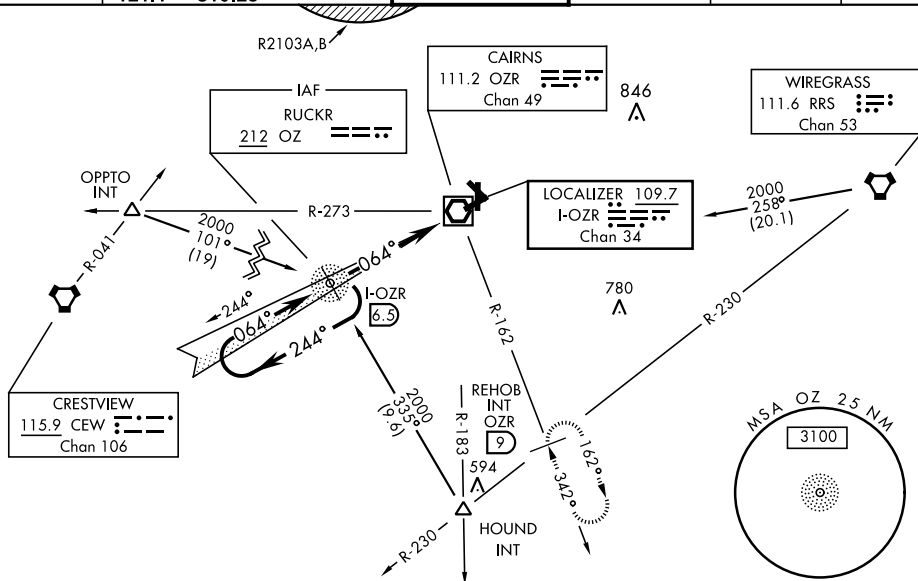


ILS or LOC RWY 6

LOC I-OZR 109.7 Chan 34		APCH CRS 064°		Rwy Idg 4546 TDZE 298 Arpt Elev 301		AL-577 [USA]		CAIRNS AAF (KOZR)					
ADF or DME required.						<div>MALSR</div> <div><div>A5</div><div>=====</div><div>↑</div></div>		<div>MISSED APPROACH: Climb to 800 then climbing right turn to 2000 via OZR VOR/DME R-162 to REHOB INT (OZR 9 DME) and hold; or when directed by ATC, climb to 800 then climbing left turn to 2000 heading 290° within 10 NM (RADAR required).</div>					
<div>▼ * When ALS inop, increase CAT ABC vis to 1 mile, CAT D RVR to 60, vis to 1¼ miles.</div>													
ATIS 111.2 316.15		CAIRNS APP CON <div><div>125.4</div><div>327.125</div><div>021°-120°</div><div>133.75</div><div>270.35</div><div>121°-219°</div><div>133.45</div><div>239.275</div><div>220°-340°</div><div>121.1</div><div>319.25</div><div>341°-020°</div></div>				CAIRNS TOWER ★ <div><div>135.2</div><div>(CTAF)</div><div>248.55</div></div>		GND CON <div><div>121.9</div><div>288.25</div></div>		CLNC DEL <div><div>118.075</div><div>380.1</div></div>		PAR	



CATEGORY	A	B	C	D
S-ILS 6	498/24		200 (200-½)	
S-LOC 6 *	760/24	462 (500-½)	760/40 462 (500-¾)	760/50 462 (500-1)
CIRCLING	780-1 479 (500-1)	820-1 519 (600-1)	860-1½ 559 (600-1½)	900-2 599 (600-2)

