

APP CRS
026°

Rwy Idg
5411

TDZE
996

Apt Elev
998

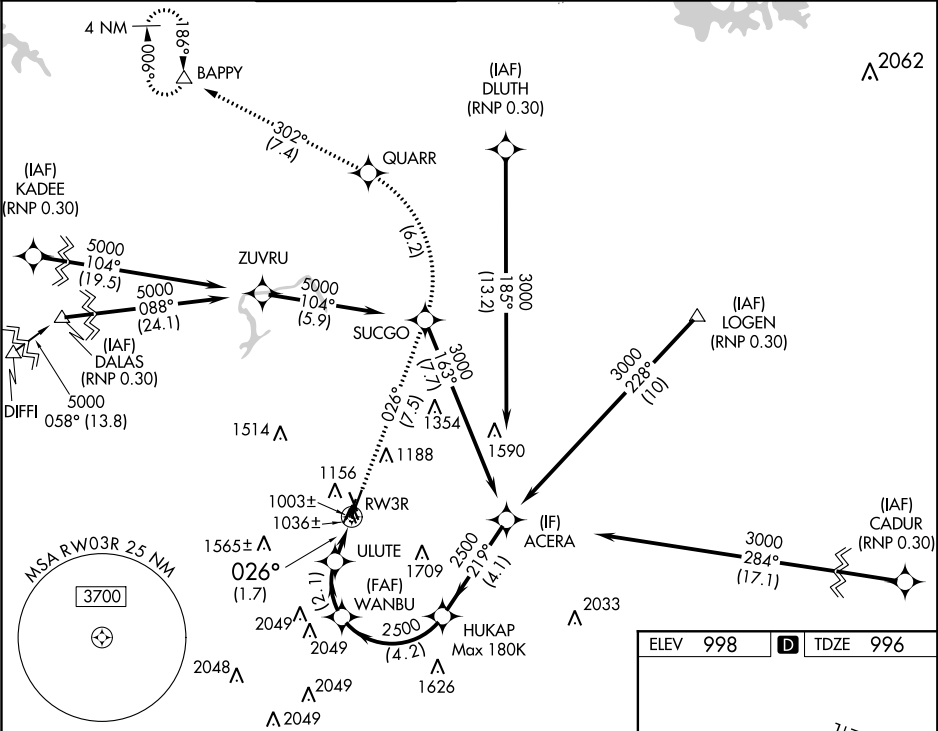
RNAV (RNP) RWY 3R

DEKALB-PEACHTREE (PDK)

For uncompensated Baro-VNAV systems, procedure NA below 1°C (33°F) or above 45°C (114°F).
RF required. GPS required.

MISSED APPROACH: Climb to 4000 on track 026° to SUCGO then left turn to QUARR then on track 302° to BAPPY and hold.

ATIS 128.4	ATLANTA APP CON 126,975 239,275	PEACHTREE TOWER ★ 120.9(CTAF) 281.5	GND CON 121.6	CLNC DEL 125.2	CLNC DEL 120.9 (When twr closed)	UNICOM 122.95	120.0
----------------------	---	---	-------------------------	--------------------------	---	-------------------------	--------------



4000

↑

tr 026°

SUCGO

QUARR

tr 302°

BAPPY

△

ACERA

HUKAP Max 180K

WANBU

ULUTE

RW03R

3000

271°

2500

2500

1701

026°

GP 3.60°

TCH 55

4.1 NM

4.2 NM

2.1 NM

1.7 NM

CATEGORY	A	B	C	D
RNP 0.10 DA	1334-1	338 (400-1)		NA
RNP 0.30 DA	1441-1 3/8	445 (500-13%)		NA

AUTHORIZATION REQUIRED

ELEV 998

D

TDZE 996

TWR 1133

3L 3R

026° to RW03R

HIRL Rwy 3R-21L

MIRL Rwy 16-34 and 3L-21R

REIL Rwy 3R and 34