

VOR/DME Z RWY 33

VORTAC MCN
114.2
Chan **89**

APCH CRS
318°

Rwy Idg **12,001**
THRE **274**
Arpt Elev **294**

AL-442 [USAF]

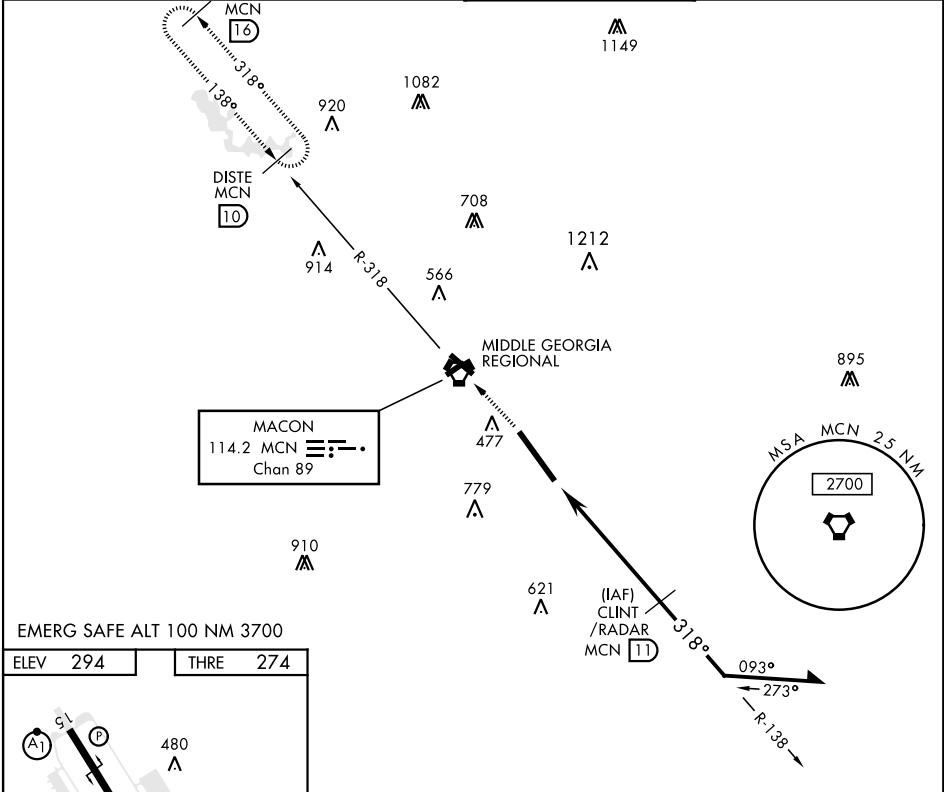
ROBINS AFB (KWRB)

* When ALS inop, increase CAT AB RVR to 55 and vis to 1 mile,
CAT CDE vis to 1½ miles.
** Circling not authorized W of Rwy 15-33.

ALSF-1

MISSED APPROACH: Climb to 2600 to
MCN VORTAC then out MCN R-318 to
DISTE and hold.

ATIS 119.475 273.475	ATLANTA APP CON 124.2 279.6	ROBINS TOWER 133.225 257.975	GND CON 121.85 275.8
--------------------------------	---------------------------------------	--	--------------------------------



EMERG SAFE ALT 100 NM 3700

ELEV 294	THRE 274
----------	----------

HIRL Rwy 15-33
318° 5.9 NM from FAF

FAF to MAP 5.3 NM

Knots	60	90	120	150	180
Min:Sec	5:18	3:32	2:39	2:07	1:46

2600 MCN

MCN R-318

VORTAC

CLINT /RADAR 11

NOTKE 5.7

6.8

2000

2600

138°

318°

093°

273°

2.68°

TCH 56

CATEGORY	A	B	C	D	E
S-33 *	780/24 507 (500-½)		780/55 507 (500-1)		
CIRCLING **	780-1 486 (500-1)		840-1½ 546 (600-1½)	960-2 666 (700-2)	1100-2¾ 806 (900-2¾)

VOR/DME Z RWY 33

SE-4, 31 DEC 2020 to 28 JAN 2021

SE-4, 31 DEC 2020 to 28 JAN 2021