

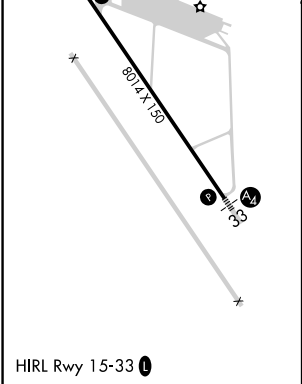
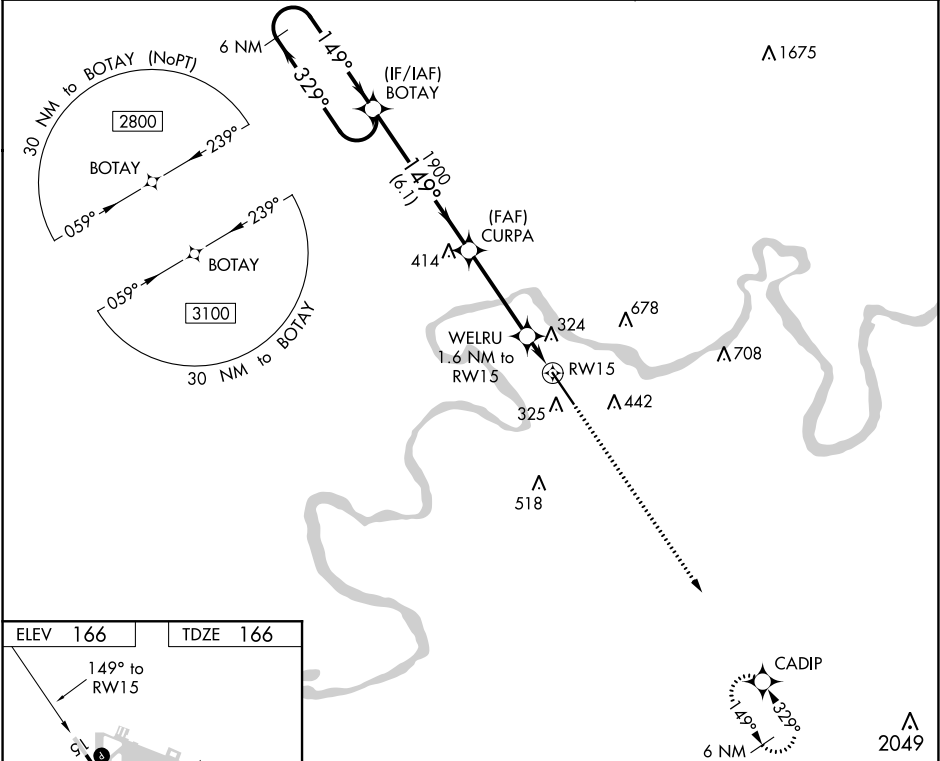
WAAS CH <b>69435</b> <b>W15A</b>	APP CRS <b>149°</b>	Rwy Idg TDZE <b>166</b> Apt Elev <b>166</b>	<b>8014</b>
--	------------------------	---	-------------

**RNAV (GPS) RWY 15**  
CRAIG FIELD (SEM)

**⚠** Baro-VNAV NA when using Montgomery altimeter setting. For uncompensated Baro-VNAV systems, LNAV/VNAV NA below -15°C (5°F) or above 54°C (130°F). DME/DME RNP-0.3 NA. VDP NA with Montgomery altimeter setting. When local altimeter setting not received, use Montgomery altimeter setting and increase all DA 78 feet, all MDA 80 feet, LPV all Cats visibility ¾ mile, LNAV/VNAV all Cats visibility and LNAV Cats C and D visibility ¼ mile, Circling Cat C visibility ½ mile and Cat D visibility ¼ mile.

**MISSED APPROACH:**  
Climb to 3100 direct CADIP and hold.

AWOS-3PT <b>119.15</b>	MONTGOMERY APP CON ★ <b>124.0 363.025</b>	UNICOM <b>122.7 (CTAF) 0</b>
---------------------------	--	---------------------------------



6 NM Holding Pattern		BOTAY		VGSI and RNAV glidepath not coincident (VGSI Angle 3.00/TCH 50).		3100 ↑		CADIP ✦	
2800 ← 329° 149° →		149°		CURPA 1900		WELRU 1.6 NM to RW15		*LNAV only	
GP 3.00° TCH 45		1900		*720		*1.1 NM to RW15		RW15	
		6.1 NM		3.7 NM		0.5 NM		1.1 NM	
CATEGORY	A		B		C		D		
LPV DA			416-¾		250 (300-¾)				
LNAV/ VNAV DA			569-1⅓		403 (500-1⅓)				
LNAV MDA	560-1		394 (400-1)		560-1½		394 (400-1⅓)		
CIRCLING	660-1		760-1		760-1½		1040-2¾		
	494 (500-1)		594 (600-1)		594 (600-1½)		874 (900-2¾)		

SE-4, 31 DEC 2020 to 28 JAN 2021

SE-4, 31 DEC 2020 to 28 JAN 2021