

RNAV (GPS) RWY 10

APCH CRS	Rwy ldg
096°	11.375
TDZE	26
Arpt Elev	41

AL-381 [USA]

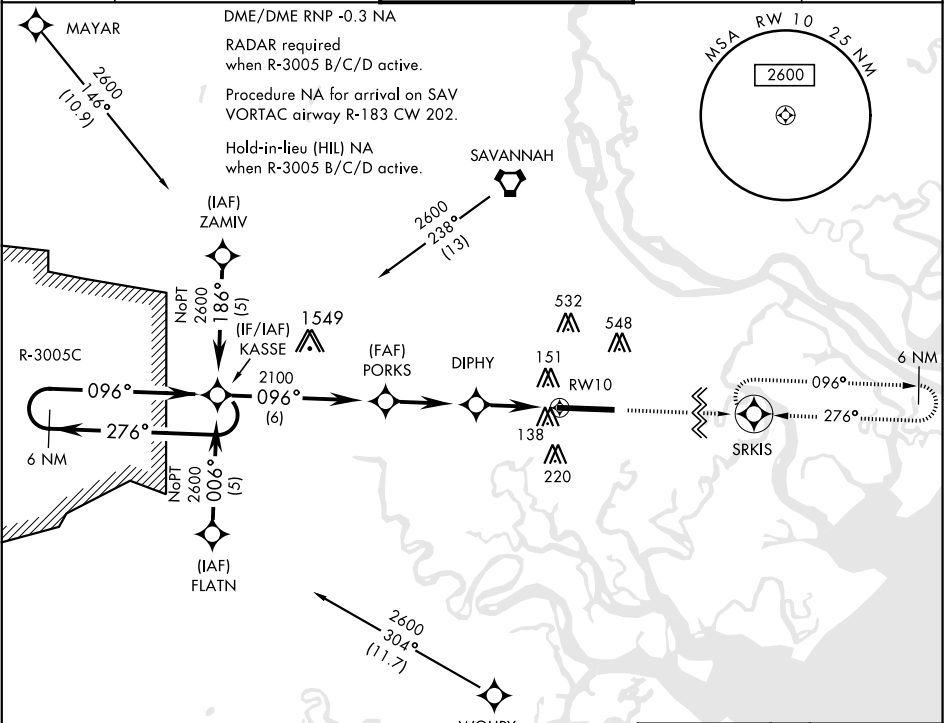
HUNTER AAF (KSVN)

**★** Circling not authorized N of Rwy 10-28 for CAT D.

**B**

MISSED APPROACH: Climb to 2500 direct SRKIS and hold.

ATIS 127.525 323.125	SAVANNAH APP CON 120.4 353.775	HUNTER TOWER ★ 124.975 (CTAF) 279.575	GND CON 121.8 291.675	ASR/PAR
----------------------------	-----------------------------------	------------------------------------------	--------------------------	---------



6 NM Holding Pattern

2500

SRKIS

KASSE

PORKS

DIPHY 3 NM to RW 10

1.1 NM to RW 10

1040

1 RW 10

3.3 NM

3 NM

CATEGORY	A	B	C	D
RNAV MDA	420-1	394 (400-1)		420-1½ 394 (400-1½)
CIRCLING *	500-1 459 (500-1)	520-1 479 (500-1)	520-1½ 479 (500-1½)	600-2 559 (600-2)

REIL Rwy 10

HIRL Rwy 10-28

ELEV 41

TDZE 26

184

146

182

TWR 97

11.375 x 197

096° to RW 10

RNAV (GPS) RWY 10

SE-4, 31 DEC 2020 to 28 JAN 2021

SE-4, 31 DEC 2020 to 28 JAN 2021