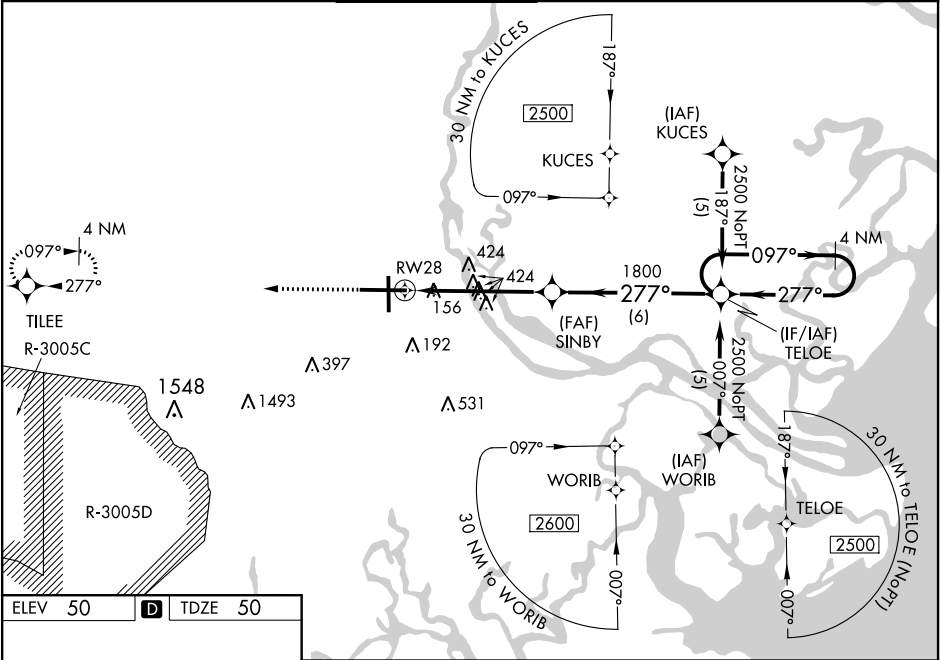


WAAS CH 40015 W28A	APP CRS 277°	Rwy Idg 9351 TDZE 50 Apt Elev 50
--	------------------------	---

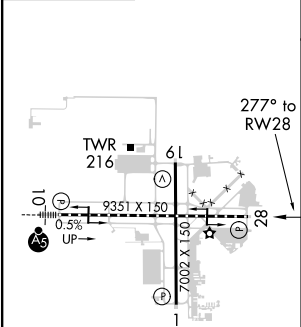
RNAV (GPS) Z RWY 28
SAVANNAH/HILTON HEAD INTL (SAV)

RNP APCH. <div><div></div><div>For uncompensated Baro-VNAV systems, LNAV/VNAV NA below -15°C (5°F) or above 49°C (120°F).</div></div>		MISSED APPROACH: Climb to 2600 direct TIEE and hold.
--	--	--

ATIS 123.75	SAVANNAH APP CON* 125.3 371.875	SAVANNAH TOWER* 119.1 (CTAF) 257.8	GND CON 121.9 348.6	CLNC DEL 119.55 291.775	UNICOM 122.95
-----------------------	---	--	-------------------------------	-----------------------------------	-------------------------



ELEV 50	D	TDZE 50
---------	----------	---------



TDZ/CL Rwy 10
REIL Rws 19 and 28
HIRL Rws 1-19 and 10-28

2600 TIEE *LNAV only.		VGSI and RNAV glidepath not coincident (VGSI Angle 3.00/TCH 66).		TELOE 4 NM Holding Pattern	
RW28		SINBY 1800		277° 2500	
1.8 NM		3.5 NM		6 NM	
CATEGORY	A	B	C	D	
LPV DA	307-1 257 (300-1)				
LNAV/VNAV DA	431-1¼ 381 (400-1¼)				
LNAV MDA	680-1	630 (700-1)	680-1¾	630 (700-1¾)	
CIRCLING	680-1	630 (700-1)	740-2 690 (700-2)	740-2¼ 690 (700-2¼)	