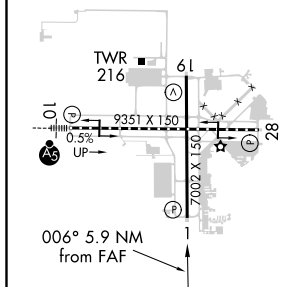


ILS or LOC RWY 1
SAVANNAH/HILTON HEAD INTL (SAV)

MISSED APPROACH: Climb to 1000 then climb to 4000 on SAV VORTAC R-001 to TILLS INT/SAV 20 DME and hold.



TDZ/CL Rwy 10
REIL Rwy 19 and 28 **L**
HIRL Rwy 1-19
and 10-28 **L**

FAF to MAP 5.9 NM

Knots	60	90	120	150	180
Min:Sec	5:54	3:56	2:57	2:22	1:58

Amdt 8B 08NOV18

ILS or LOC RWY 1