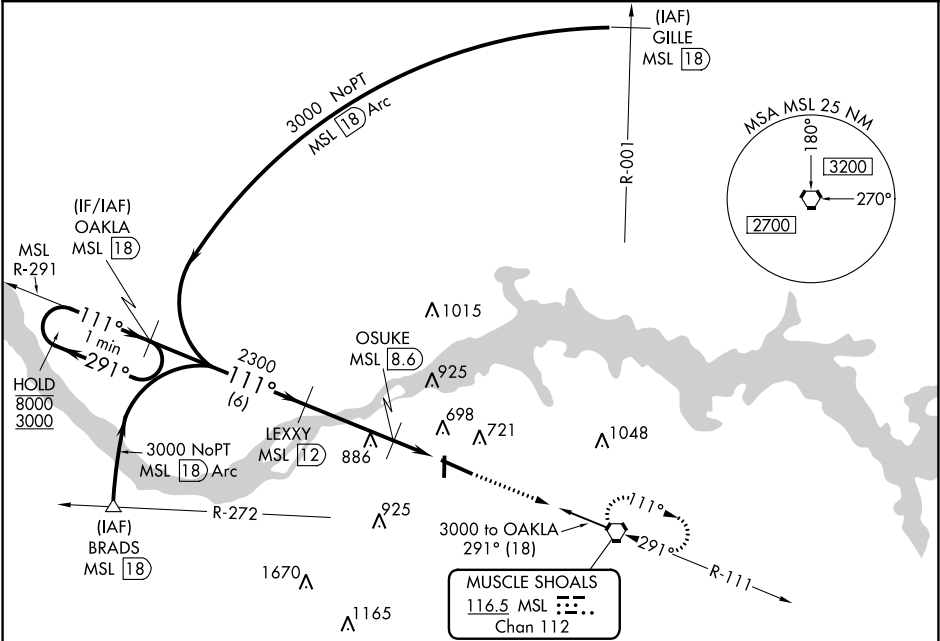


VORTAC MSL	APP CRS	Rwy Idg	6694
116.5	111°	TDZE	544
Chan 112		Apt Elev	551

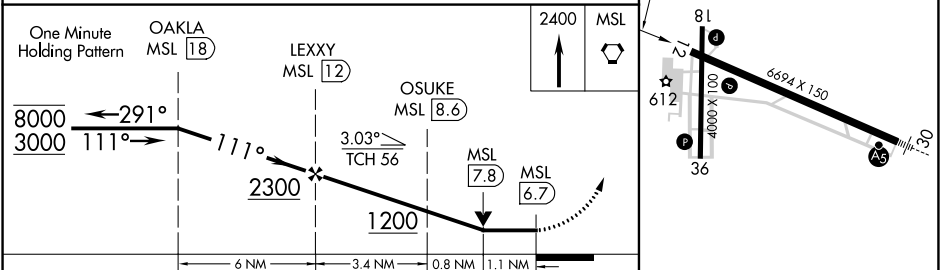
VOR RWY 12  
NORTHWEST ALABAMA RGNL (MSL)

DME required.	MISSED APPROACH: Climb to 2400 direct MSL VORTAC and hold.
▼ ▲ Rwy 12 helicopter visibility reduction below 3/4 SM NA.	

ASOS 119.425	MEMPHIS CENTER 120.8 307.0	GCO 121.725	UNICOM 123.05 (CTAF) 0
-----------------	-------------------------------	----------------	---------------------------



ELEV 551	TDZE 544
111° 5.3 NM from FAF	



CATEGORY	A	B	C	D
S-12	960-1 416 (500-1)		960-1 1/8 416 (500-1 1/8)	
CIRCLING	1040-1 489 (500-1)		1280-2 729 (800-2)	1280-2 1/4 729 (800-2 1/4)

SE-4, 31 DEC 2020 to 28 JAN 2021

SE-4, 31 DEC 2020 to 28 JAN 2021