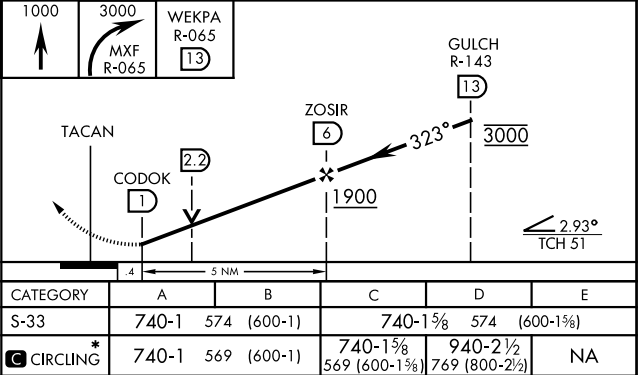
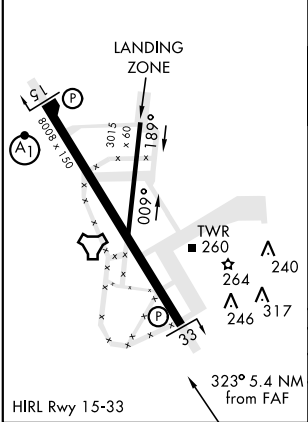
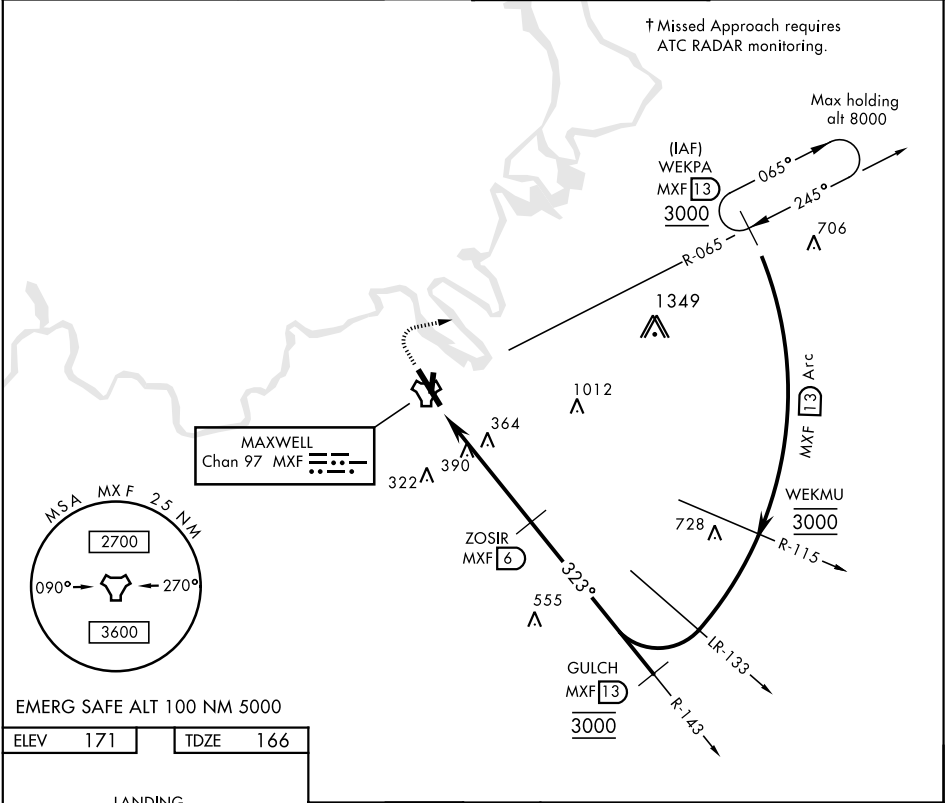


TACAN RWY 33

TACAN MXF Chan <b>97</b>	APCH CRS <b>323°</b>	Rwy ldg TDZE <b>166</b> Arpt Elev <b>171</b>	AL-274 [USAF]	MAXWELL AFB (KMXF)
-----------------------------	-------------------------	--	---------------	--------------------

* Circling not authorized E of Rwy 15-33.		† MISSED APPROACH: Climb to 1000, then climbing right turn to 3000 to intercept MXF TACAN R-065 outbound to 13 DME (WEKPA) and hold.		
ATIS ★ <b>134.7 269.9</b>	MONTGOMERY APP CON <b>121.2 269.05</b>	MAXWELL TOWER ★ <b>118.15 253.5</b>	GND CON <b>127.15 289.4</b>	



TACAN RWY 33

SE-4, 31 DEC 2020 to 28 JAN 2021

SE-4, 31 DEC 2020 to 28 JAN 2021