

WAAS  
CH **56633**  
**W03A**

APP CRS  
**034°**

Rwy Idg  
TDZE **221**  
Apt Elev **221**

**RNAV (GPS) RWY 3**

MONTGOMERY RGNL (DANNELLY FIELD) (MGM)

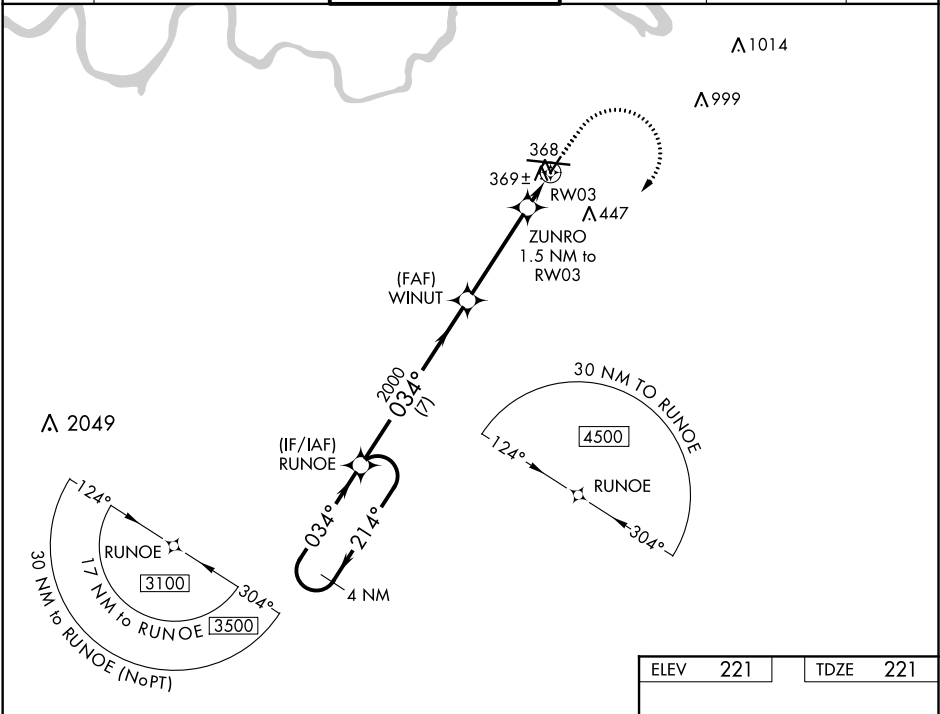
▼

ASR

For uncompensated Baro-VNAV systems, LNAV/VNAV NA below -8°C (18°F) or above 54°C (130°F). DME/DME RNP-0.3 NA.  
Helicopter visibility reduction below ¾ SM NA.

MISSED APPROACH: Climb to 900 then climbing right turn to 3100 direct RUNOE and hold.

ATIS <b>120.675</b>	MONTGOMERY APP CON ★ <b>124.0 363.025</b>	DANNELLY TOWER ★ <b>119.7 (CTAF) 0 360.85</b>	GND CON <b>121.7 348.6</b>	CLNC DEL <b>118.3 270.3</b>	UNICOM <b>122.95</b>
------------------------	--	--	-------------------------------	--------------------------------	-------------------------



4 NM Holding Pattern		ELEV 221		TDZE 221	
RUNOE		900		3100	
WINUT		2000		RUNOE	
ZUNRO 1.5 NM to RW03		*LNAV only			
RW03					
GP 3.00° TCH 43		*740			
7 NM		4 NM		1.5 NM	
CATEGORY	A	B	C	D	
LPV DA	484-7/8		263 (300-7/8)		
LNAV/VNAV DA	550-1 1/8		329 (400-1 1/8)		
LNAV MDA	620-1 399 (400-1)		620-1 1/8 399 (400-1 1/8)		
CIRCLING	700-1 479 (500-1)		800-1 1/2 579 (600-1 1/2)		860-2 639 (700-2)

REIL Rwy 3 0

MIRL Rwy 3-21

HIRL Rwy 10-28