

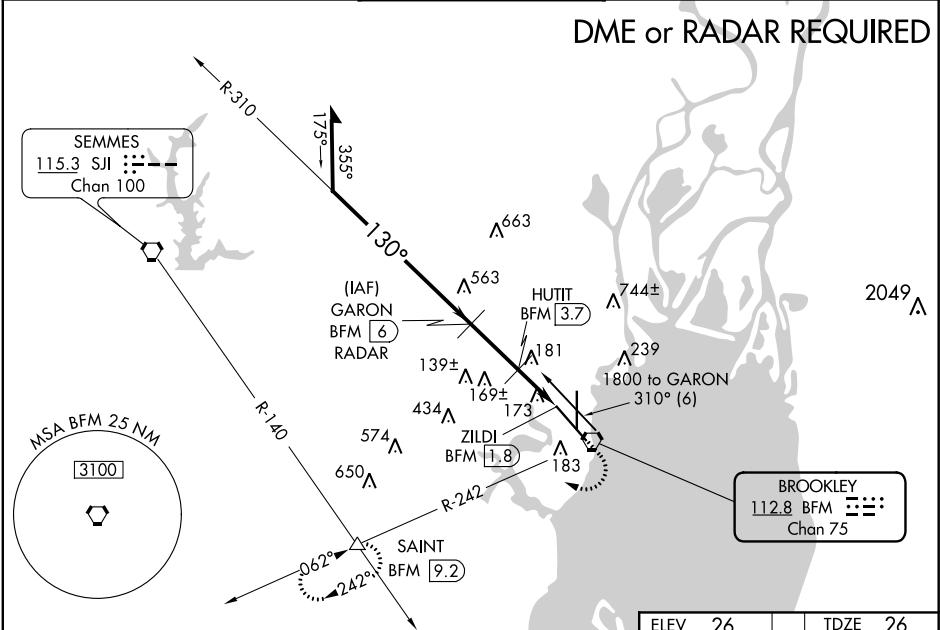
| | | | |
|------------|---------|----------|------|
| VORTAC BFM | APP CRS | Rwy Idg | 9618 |
| 112.8 | 130° | TDZE | 26 |
| Chan 75 | | Apt Elev | 26 |

VOR RWY 14
MOBILE DOWNTOWN (BFM)

⚠ DME or RADAR required. Visibility reduction by helicopters NA. When local altimeter setting not received; use Mobile Rgnl altimeter setting and increase all MDA 60 feet; increase S-14 Cat C visibility 1/8 SM and increase Circling Cat C visibility 1/4 SM; HUTIT DME FIX MINIMUMS; Increase S-14 Cats C/D visibility 1/8 SM and increase Circling Cat C visibility 1/4 mile. VDP NA when using Mobile Rgnl altimeter setting.

MISSED APPROACH: Climb to 440 then climbing right turn to 2000 on BFM VORTAC R-242 to SAINT INT/BFM 9.2 DME and hold.

| | | | | |
|-----------------|--------------------------------|--------------------------------------|------------------------|------------------|
| ATIS 135.575 | MOBILE APP CON★ 118.5 269.3 | DOWNTOWN TOWER★ 118.8(CTAF) 251.1 | GND CON 121.7 239.3 | UNICOM 122.95 |
|-----------------|--------------------------------|--------------------------------------|------------------------|------------------|



*680 when using Mobile Rgnl altimeter setting.

Remain within 10 NM

1800 310° 130°

VGSI and descent angles not coincident (VGSI Angle 3.00/TCH 68).

1500

*640

2.3 NM 0.9 1.1

440 2000 SAINT

GARON BFM 6 RADAR

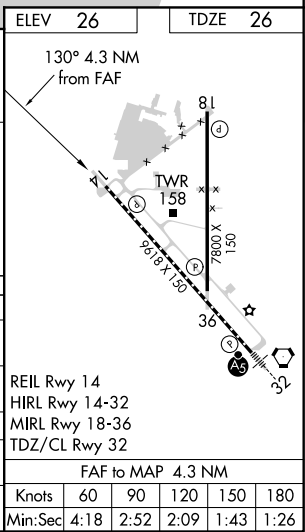
HUTIT BFM 3.7

BFM 2.8

ZILDI BFM 1.8

3.16° TCH 50

| CATEGORY | A | B | C | D |
|------------------------|-------|-------------|------------------------|-------------------------|
| S-14 | 640-1 | 614 (700-1) | 640-1¾ 614 (700-1¾) | 640-2 614 (700-2) |
| CIRCLING | 680-1 | 654 (700-1) | 680-1¾ 654 (700-1¾) | 1100-3 1074 (1100-3) |
| HUTIT DME FIX MINIMUMS | | | | |
| S-14 | 440-1 | 414 (500-1) | 440-1¼ | 414 (500-1¼) |
| CIRCLING | 680-1 | 654 (700-1) | 680-1¾ 654 (700-1¾) | 1100-3 1074 (1100-3) |



SE-4, 31 DEC 2020 to 28 JAN 2021

SE-4, 31 DEC 2020 to 28 JAN 2021