

WAAS CH 56511 W36A	APP CRS 001°	Rwy Idg 7800 TDZE 26 Apt Elev 26
--	------------------------	---

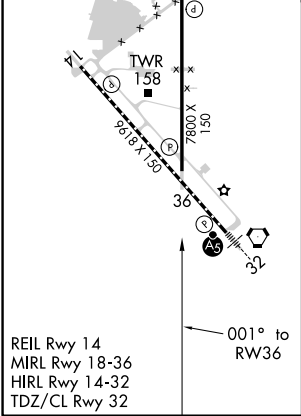
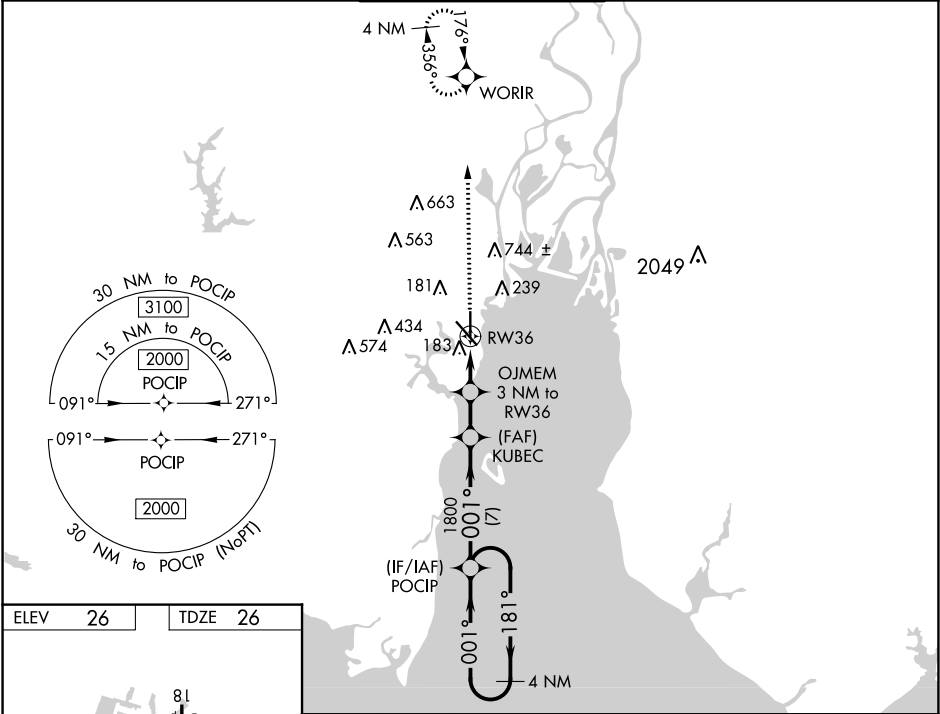
RNAV (GPS) RWY 36

MOBILE DOWNTOWN (BFM)

DME/DME RNP-0.3 NA. When local altimeter setting not received, use Mobile Rgnl altimeter setting and increase all DA 50 feet and MDA 60 feet and increase LPV visibility all Cats ¼ mile, increase LNAV/VNAV visibility all Cats ⅓ mile, increase LNAV Cat C/D visibility ¼ mile, and increase Circling Cat C visibility ¼ mile. For uncompensated Baro-VNAV systems, LNAV/VNAV NA below 13°C (56°F) or above 54°C (130°F). Baro-VNAV and VDP NA when using Mobile Rgnl altimeter setting. Helicopter visibility reduction below ¾ SM NA.

MISSED APPROACH:
Climb to 2100 direct
WORIR and hold.

ATIS 135.575	MOBILE APP CON ★ 118.5 269.3	DOWNTOWN TOWER ★ 118.8 (CTAF) 0 251.1	GND CON 121.7 239.3	UNICOM 122.95
------------------------	--	---	-------------------------------	-------------------------



2100	WORIR	VGSI and RNAV glidepath not coincident (VGSI Angle 3.00/TCH 62).				4 NM Holding Pattern
*LNAV only.		OJMEM 3 NM to RW36	KUBEC 1800	POCIP	181°	2000
RW36		*1.1 NM to RW36	1020*	1800	001°	GP 3.00° TCH 50
CATEGORY	A	B	C	D		
LPV DA	308-7/8	282 (300-7/8)				
LNAV/VNAV DA	470-1 1/2	444 (500-1 1/2)				
LNAV MDA	440-1	414 (500-1)	440-1 1/8	414 (500-1 1/8)		
CIRCLING	680-1	654 (700-1)	680-1 3/4	1100-3	654 (700-1 3/4)	1074 (1100-3)

SE-4, 31 DEC 2020 to 28 JAN 2021

SE-4, 31 DEC 2020 to 28 JAN 2021