

LOC/DME I-RUJ 108.5 Chan 22	APP CRS 320°	Rwy Idg 9618 TDZE 25 Apt Elev 26
---	------------------------	---

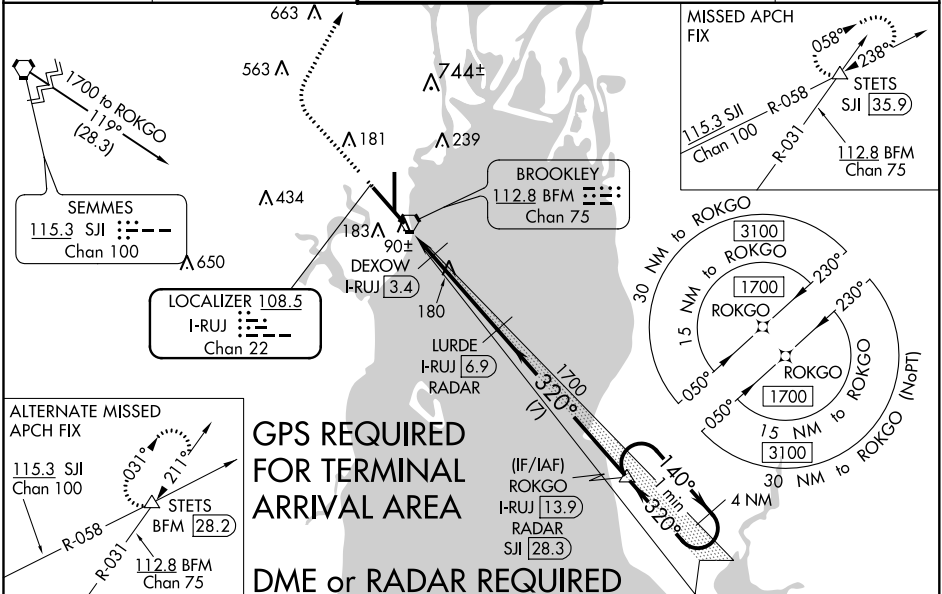
ILS or LOC RWY 32
MOBILE DOWNTOWN (BFM)

⚠ DME or radar required. When local altimeter setting not received, use Mobile Rgnl altimeter setting and increase all DA 50 feet and all MDA 60 feet, increase S-LOC 32 Cat C/D visibility ½ mile and Circling Cat C visibility ¼ mile, increase DEXOW fix minimums S-LOC 32 Cats C/D visibility ½ mile. For inop MALSR increase S-ILS 32 all Cats visibility to RVR 4000. VDP NA when using Mobile Rgnl altimeter setting.

MALSR

MISSED APPROACH: Climb to 800 then climbing right turn to 2000 on heading 030° and SJI R-058 to STETS INT/SJI 35.9 DME and hold.

ATIS 135.575	MOBILE APP CON ★ 118.5 269.3	DOWNTOWN TOWER ★ 118.8 (CTAF) 251.1	GND CON 121.7 239.3	UNICOM 122.95
------------------------	--	---	-------------------------------	-------------------------



ELEV 26	TDZE 25	800	2000	STETS	VGSI and ILS glidepath not coincident (VGSI Angle 3.00/TCH 71).
REIL Rwy 14 MIRL Rwy 18-36 HIRL Rwy 14-32 TDZ/CL Rwy 32		*LOC only		One Minute Holding Pattern	
Knots 60 90 120 150 180 Min:Sec 5:06 3:24 2:33 2:02 1:42		CATEGORY		S-ILS 32	
		A		225/18 200 (200-½)	
		S-LOC 32		580/24 555 (600-½) 580-1¼ 555 (600-1¼)	
		CIRCLING		680-1 654 (700-1) 680-1¾ 1100-3 654 (700-1¾) 1074 (1100-3)	
		DEXOW FIX MINIMUMS			
		S-LOC 32		340/24 315 (400-½) 340/26 315 (400-½)	
		CIRCLING		680-1 654 (700-1) 680-1¾ 1100-3 654 (700-1¾) 1074 (1100-3)	

SE-4, 31 DEC 2020 to 28 JAN 2021

SE-4, 31 DEC 2020 to 28 JAN 2021