

WAAS CH <b>78128</b> <b>W18A</b>	APP CRS <b>181°</b>	Rwy Idg <b>4376</b> TDZE <b>217</b> Apt Elev <b>219</b>
--	------------------------	---

# RNAV (GPS) RWY 18

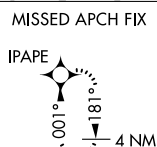
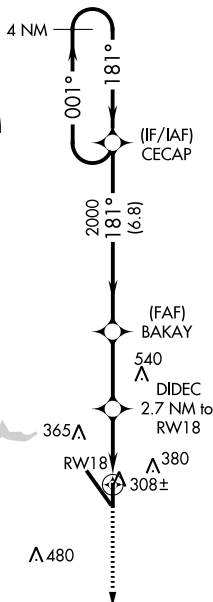
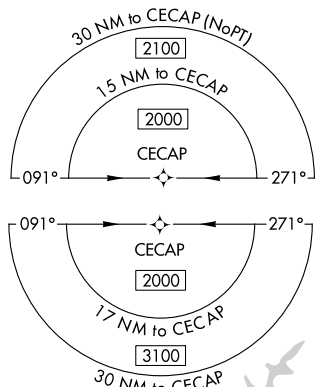
## MOBILE RGNL (MOB)

RNP APCH.

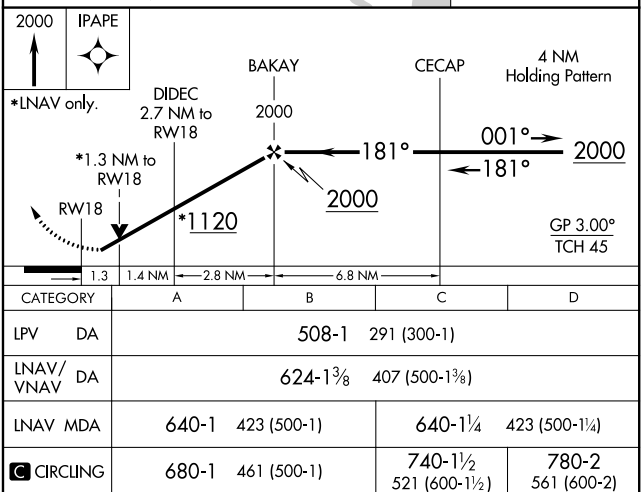
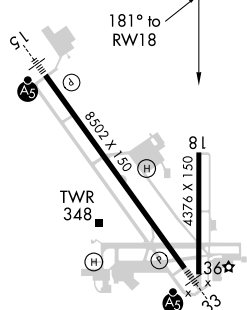
**T** For uncompensated Baro-VNAV systems, LNAV/VNAV NA below -4°C (25°F) or above 42°C (107°F). Rwy 18 helicopter visibility reduction below  $\frac{3}{4}$  SM NA.

**MISSED APPROACH:** Climb to 2000 direct IPAPE and hold.

ATIS	MOBILE APP CON ★	MOBILE TOWER ★	GND CON	CLNC DEL	UNICOM
124.75 257.85	118.5 269.3	118.3 (CTAF) 0 239.0	121.9 348.6	119.85	122.95



ELEV 219		TDZE 217
----------	--	----------



SE-4, 31 DEC 2020 to 28 JAN 2021