

WAAS CH 86421 W28A	APP CRS 282°	Rwy Idg 4184 TDZE 430 Apt Elev 437
--	------------------------	---

RNAV (GPS) RWY 28

MACON DOWNTOWN (MAC)

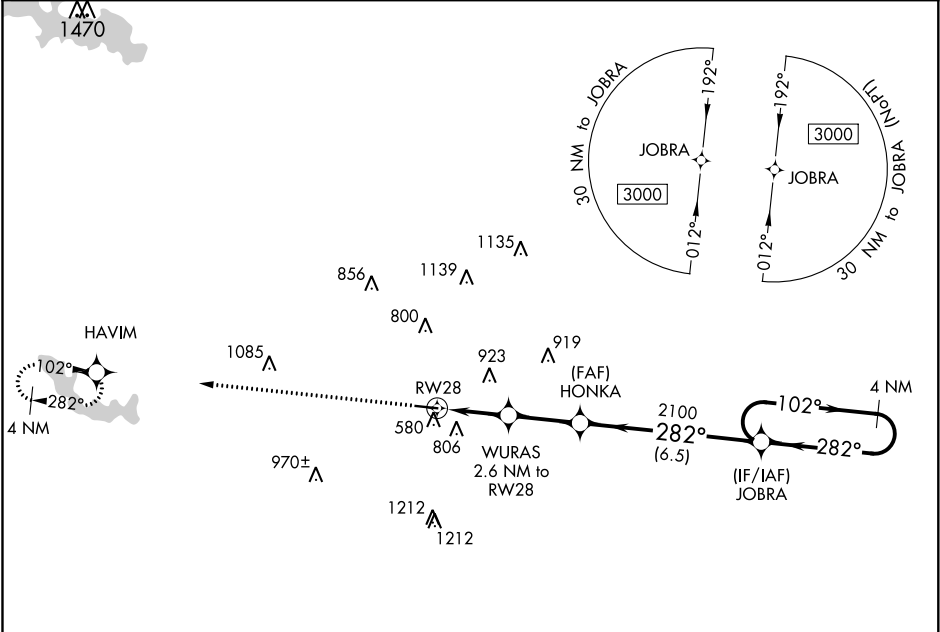
⚠

NA

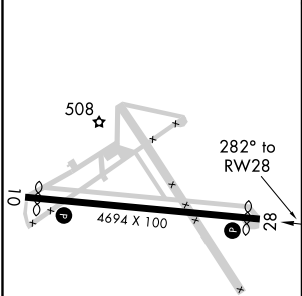
Baro-VNAV NA. Rwy 28 helicopter visibility reduction below $\frac{3}{4}$ SM NA. DME/DME RNP-0.3 NA. Use Middle Georgia altimeter setting, when not received, use Robbins AFB altimeter setting and increase LPV DA to 726 feet, increase LNAV/VNAV DA to 1063 feet and increase all MDA 20 feet.

MISSED APPROACH: Climb to 3000 direct HAVIM and hold.

MCN ASOS 120.775	ATLANTA APP CON ★ 124.2 279.6	UNICOM 123.0 (CTAF) 0
----------------------------	---	---------------------------------



ELEV 437	D	TDZE 430
-----------------	----------	-----------------



3000

HAVIM

VGSI and RNAV glidepath not coincident (VGSI Angle 3.00°/TCH 23).

*LNAV only.

WURAS
2.6 NM to RW28

HONKA
2100

2100

282°

102°

3000

4 NM Holding Pattern

GP 3.00° TCH 40

CATEGORY	A	B	C	D
LPV DA	712-1		282 (300-1)	
LNAV/VNAV DA	1049-2½		619 (700-2½)	
LNAV MDA	920-1	490 (500-1)	920-1⅔	490 (500-1⅔)
CIRCLING	1200-1	763 (800-1)	1320-2¾ 883 (900-2¾)	1480-3 1043 (1100-3)