

LOC/DME I-MAC	Rwy Idg	4184
111.9	TDZE	430
Chan 56	Apt Elev	437

APP CRS	
105°	

LOC RWY 10

MACON DOWNTOWN (MAC)

NA Use Middle Georgia Rgnl altimeter setting; when not received, use Robins AFB altimeter setting and increase all MDA 20 feet.

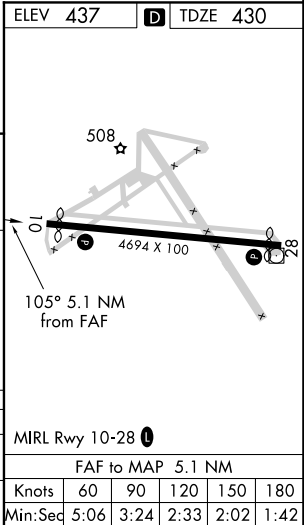
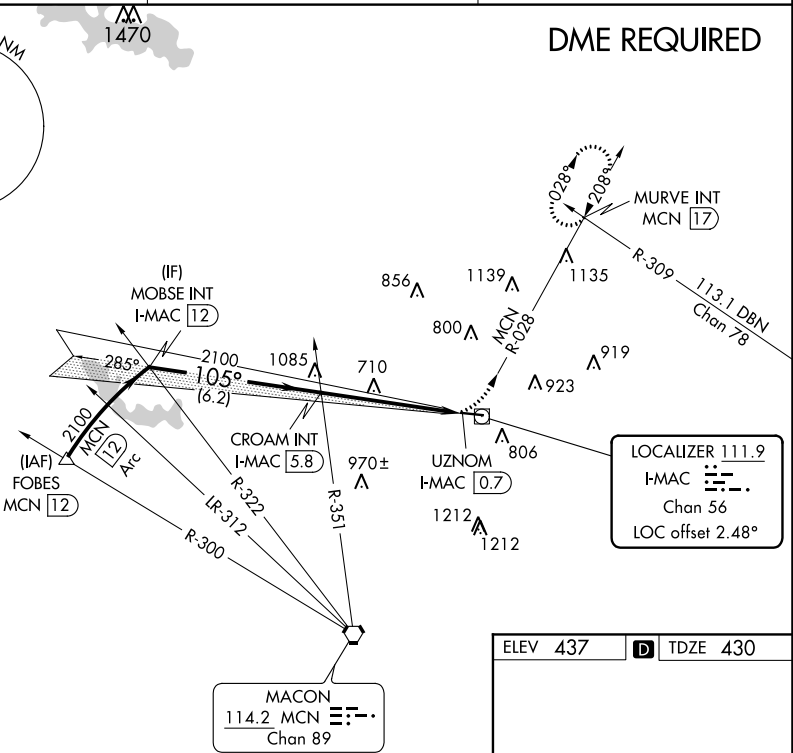
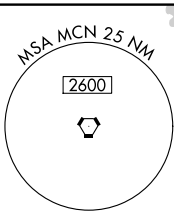
MISSED APPROACH: Climbing left turn to 2200 on MCN VORTAC R-028 to MURVE INT/MCN 17 DME and hold.

MCN ASOS
120.775

ATLANTA APP CON ★
124.2 279.6

UNICOM
123.0 (CTAF) 0

DME REQUIRED



VGSi and descent angles not coincident (VGSi Angle 3.00/TCH 23)				
MOBSE INT I-MAC 12				
CROAM INT I-MAC 5.8				
UZNOM I-MAC 0.7				
2100 105° 2100 3.04° TCH 40				
6.2 NM 5.1 NM				
CATEGORY	A	B	C	D
S-10	1060-1	630 (700-1)	1060-1¾	630 (700-1¾)
CIRCLING	1200-1	763 (800-1)	1320-2¾	1480-3
			883 (900-2¾)	1043 (1100-3)