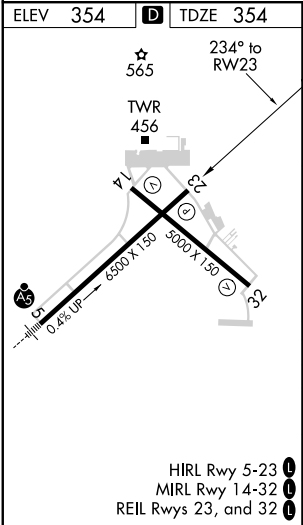
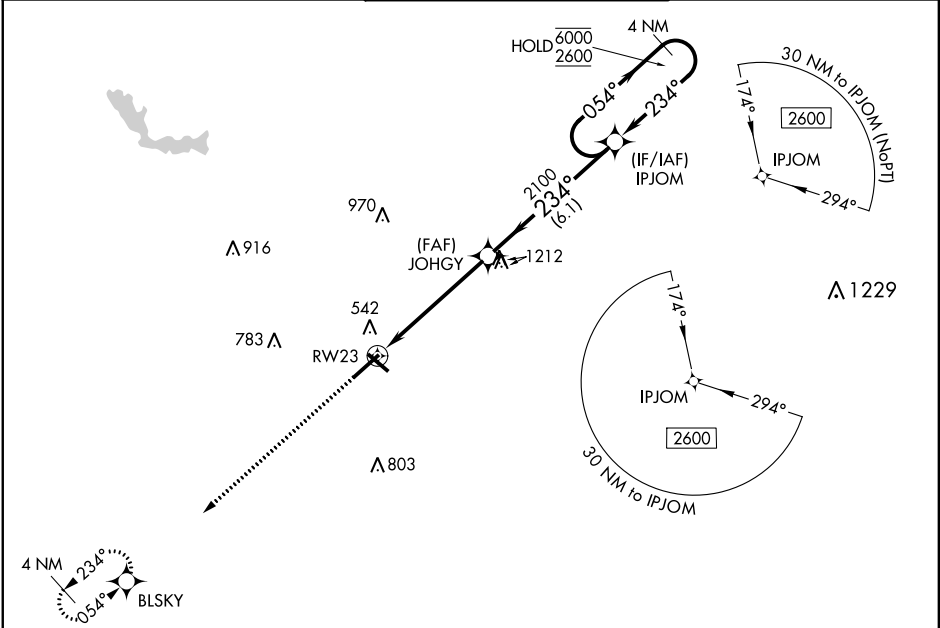


WAAS CH <b>40419</b> <b>W23A</b>	APP CRS <b>234°</b>	Rwy Idg TDZE Apt Elev	<b>6426</b> <b>354</b> <b>354</b>
----------------------------------------	------------------------	-----------------------------	-----------------------------------------

RNAV (GPS) RWY 23  
MIDDLE GEORGIA RGNL (MCN)

RNP APCH.			MISSED APPROACH: Climb to 2600 direct BLSKY and hold.	
Rwy 23 helicopter visibility reduction below ¾ SM NA. For uncompensated Baro-VNAV systems, LNAV/VNAV NA below -8°C or above 54°C.				
ATIS <b>120.775</b>	ATLANTA APP CON ★ <b>124.2 279.6</b>	MACON TOWER ★ <b>128.2 (CTAF) 257.8</b>	GND CON <b>121.65</b>	UNICOM <b>122.95</b>



2600	BLSKY	VGSI and RNAV glidepath not coincident (VGSI Angle 3.00°/TCH 67°).		4 NM Holding Pattern
*LNAV only.		JOHGY 2100	IPJOM	054° 6000 234° 2600
RWY 23		*1.1 NM to RWY 23	2100	GP 3.00° TCH 52
1.1 NM		4.2 NM	6.1 NM	
CATEGORY	A	B	C	D
LPV DA	635-1		281 (300-1)	
LNAV/VNAV DA	726-1¼		372 (400-1¼)	
LNAV MDA	760-1	406 (500-1)	760-1½	406 (500-1½)
CIRCLING	900-1	546 (600-1)	920-1½ 566 (600-1½)	1120-2½ 766 (800-2½)