

VORTAC SSI

109.8

Chan 35

APP CRS

027°

Rwy Idg

4798

TDZE

16

Apt Elev

19

VOR RWY 4

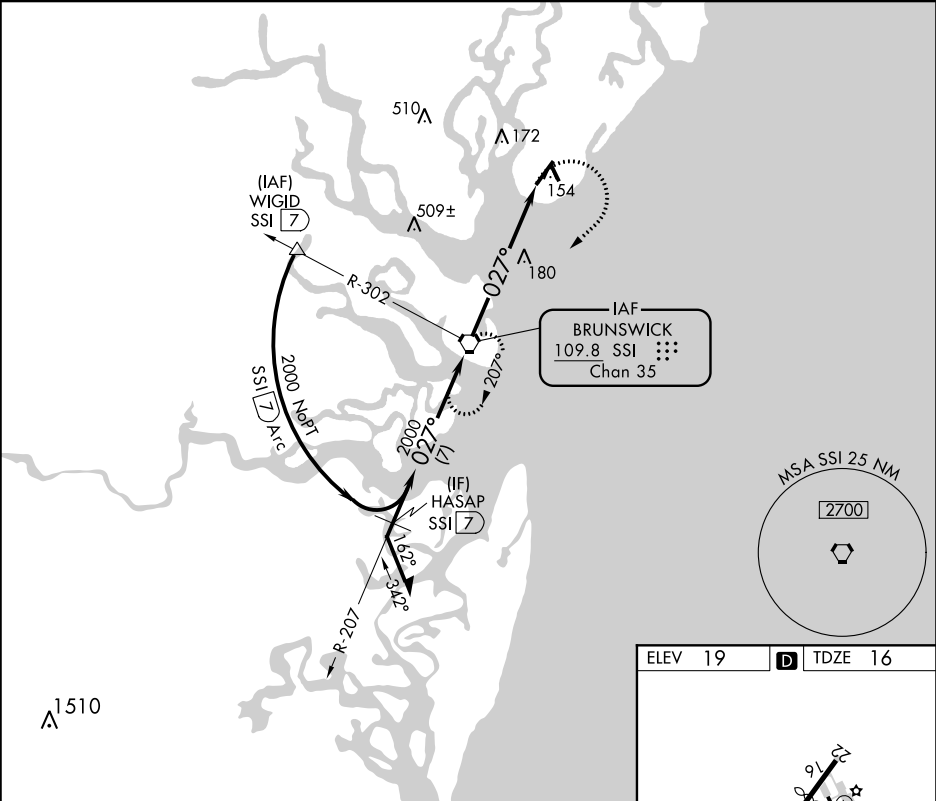
ST SIMONS ISLAND (SSI)

▼

Rwy 4 helicopter visibility reduction below ¾ SM NA.
Circling Rwy 16, 22, 34 NA at night.

MISSED APPROACH: Climbing right turn to 2000 direct
SSI VORTAC and hold.

ASOS 120.025	JACKSONVILLE CENTER 126.75 277.4	UNICOM 123.05 (CTAF) 0
-----------------	-------------------------------------	---------------------------



VGSI and descent angles not coincident
(VGSI Angle 4.00/TCH 57).

2000 SSI

Remain within 10 NM

207°

027°

2000

2.91°

TCH 34

6.3 NM

SSI 6.3

CATEGORY	A	B	C	D
S-4	500-1	484 (500-1)	500-1 3/8 484 (500-1 3/8)	500-1 1/2 484 (500-1 1/2)
CIRCLING	500-1	481 (500-1)	500-1 1/2 481 (500-1 1/2)	580-2 561 (600-2)

ELEV 19

TDZE 16

584 X 100

331 X 75

027° 6.3 NM from FAF

REIL Rwy 4

MIRL Rwy 4-22

HIRL Rwy 16-34

FAF to MAP 6.3 NM

Knots	60	90	120	150	180
Min:Sec	6:18	4:12	3:09	2:31	2:06

SE-4, 31 DEC 2020 to 28 JAN 2021

SE-4, 31 DEC 2020 to 28 JAN 2021