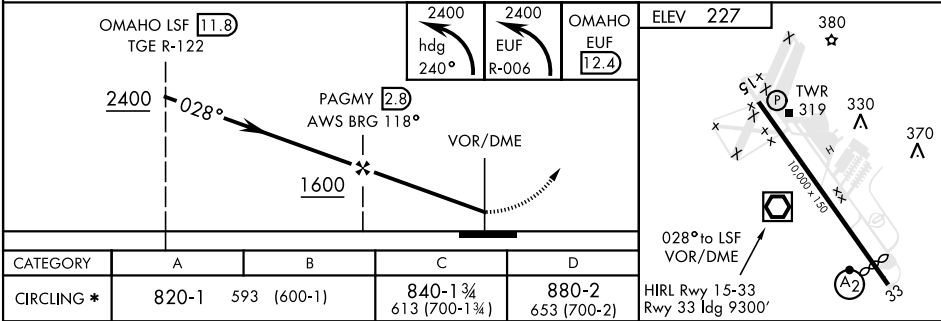
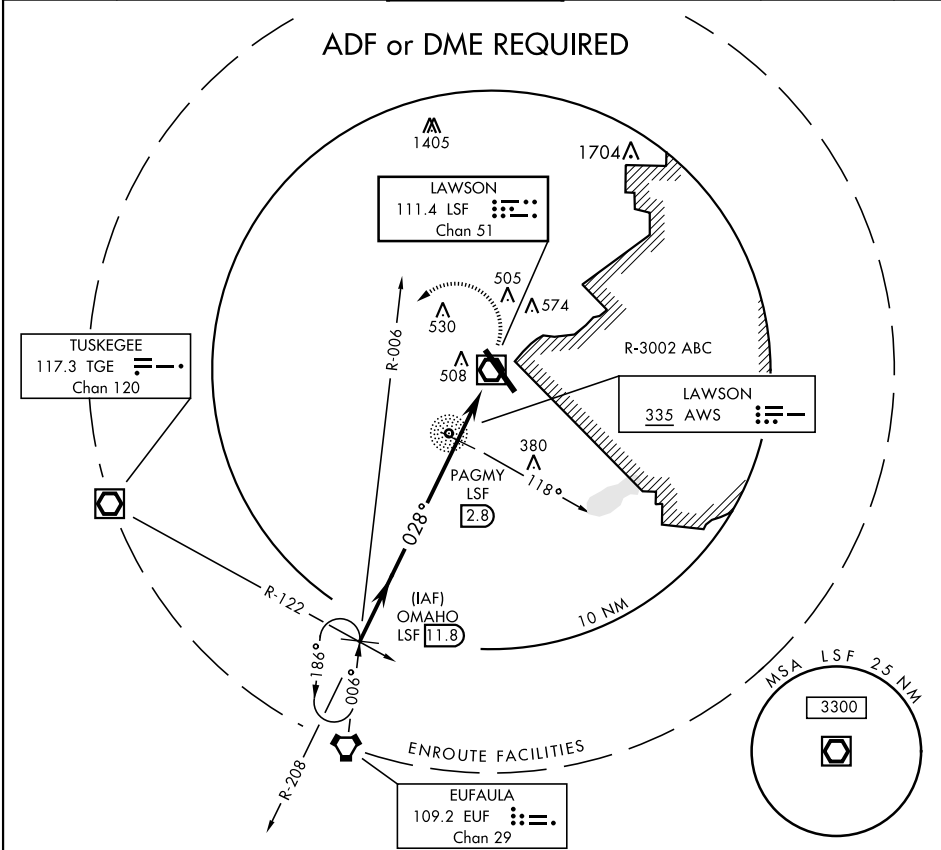


FT. BENNING (COLUMBUS), GEORGIA

VOR-A

VOR/DME LSF <b>111.4</b> Chan <b>51</b>	APCH CRS <b>028°</b>	Rwy Idg TDZE Arpt Elev <b>N/A</b> <b>N/A</b> <b>227</b>	AL-146 [USA]		LAWSON AAF (KLSF)	
<div><div></div><div>* Circling not authorized E of Rwy 15-33.</div><div>NA when tower closed.</div></div>			MISSED APPROACH: Climbing left turn to 2400 via heading 240° and EUF VORTAC R-006 to OMAHO INT/EUF 12.4 and hold.			
ATIS ★ <b>134.375</b>	ATLANTA APP CON <b>125.5 323.1</b> blw 7000 <b>126.55 353.75</b> 7000 and abv		LAWSON TOWER ★ <b>119.05 269.525</b>	GND CON <b>121.7 254.25</b>	CLNC DEL <b>121.7 251.15</b>	ASR/ PAR



VOR-A

SE-4, 31 DEC 2020 to 28 JAN 2021

SE-4, 31 DEC 2020 to 28 JAN 2021