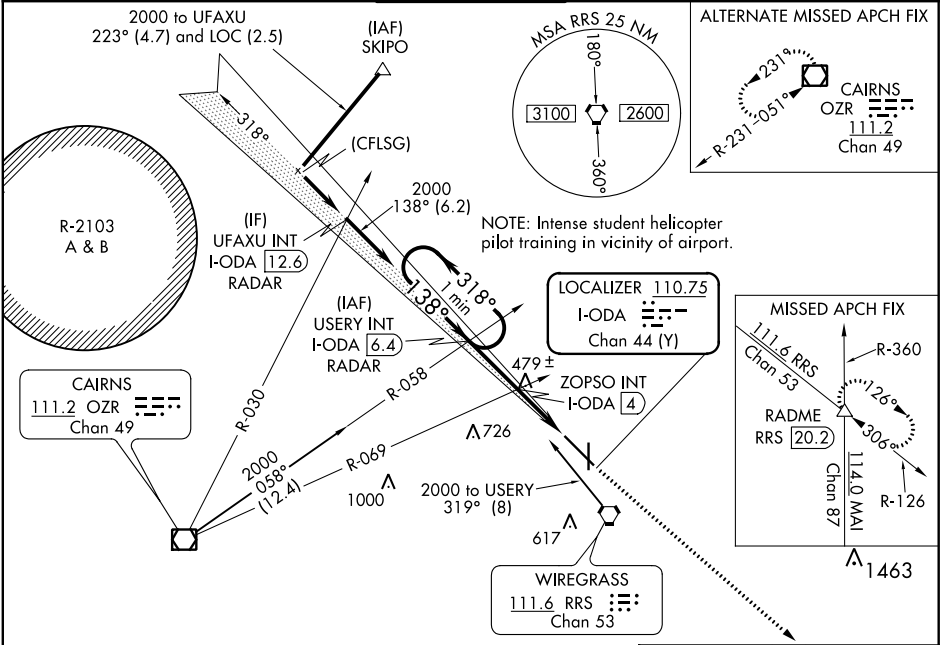


LOC/DME I-ODA <b>110.75</b> Chan <b>44</b> (Y)	APP CRS <b>138°</b>	Rwy Idg TDZE <b>401</b> Apt Elev <b>401</b>	<b>8496</b>
--	------------------------	---	-------------

ILS or LOC RWY 14  
 DOTHAN RGNL (DHN)

	MISSED APPROACH: Climb to 3000 on heading 138° and on RRS VORTAC R-126 to RADME INT/ RRS 20.2 DME and hold.
--	---

ATIS <b>135.725</b>	CAIRNS APP CON ★ <b>125.4 327.125</b>	DOTHAN TOWER★ <b>118.4 (CTAF) 0 257.6</b>	GND CON <b>121.7 348.6</b>	UNICOM <b>122.95</b>
------------------------	--	--	-------------------------------	-------------------------



VGSI and ILS glidepath not coincident (VGSI Angle 3.00/TCH 40).				3000 hdg 138°	RADME RRS R-126	ELEV 401 TDZE 401
One Minute Holding Pattern				*LOC only.		
USERY INT I-ODA 6.4 RADAR				138° 4.9 NM from FAF		
ZOPSO INT I-ODA 4 I-ODA* 2.5 I-ODA 1.6				81 0.548 x 1.00 0.33 0.36		
GS 3.00° TCH 54 Use I-ODA DME when on localizer course.				555 TWR 492		
CATEGORY A B C D				REIL Rwy 18 REIL Rwy 14 HIRL Rwy 18-36 HIRL Rwy 14-32		
S-ILS 14 601-¾ 200 (200-¾)				FAF to MAP 4.9 NM		
S-LOC 14 1100-1 699 (700-1) 1100-2 699 (700-2)				Knots 60 90 120 150 180 Min:Sec 4:54 3:16 2:27 1:58 1:38		
CIRCLING 1100-1 699 (700-1) 1100-2 699 (700-2)				ZOPSO FIX MINIMUMS		
S-LOC 14 740-1 339 (400-1)				920-1½ 1040-2 519 (600-½) 639 (700-2)		
CIRCLING 860-1 459 (500-1)				DOTHAN, ALABAMA Amdt 1B 18JUN20		