

VORTAC RRS 111.6 Chan 53	APP CRS 333°	Rwy Idg TDZE Apt Elev	5000 379 401
---------------------------------------	------------------------	-----------------------------	---

COPTER VOR RWY 36

DOTHAN RGNL (DHN)

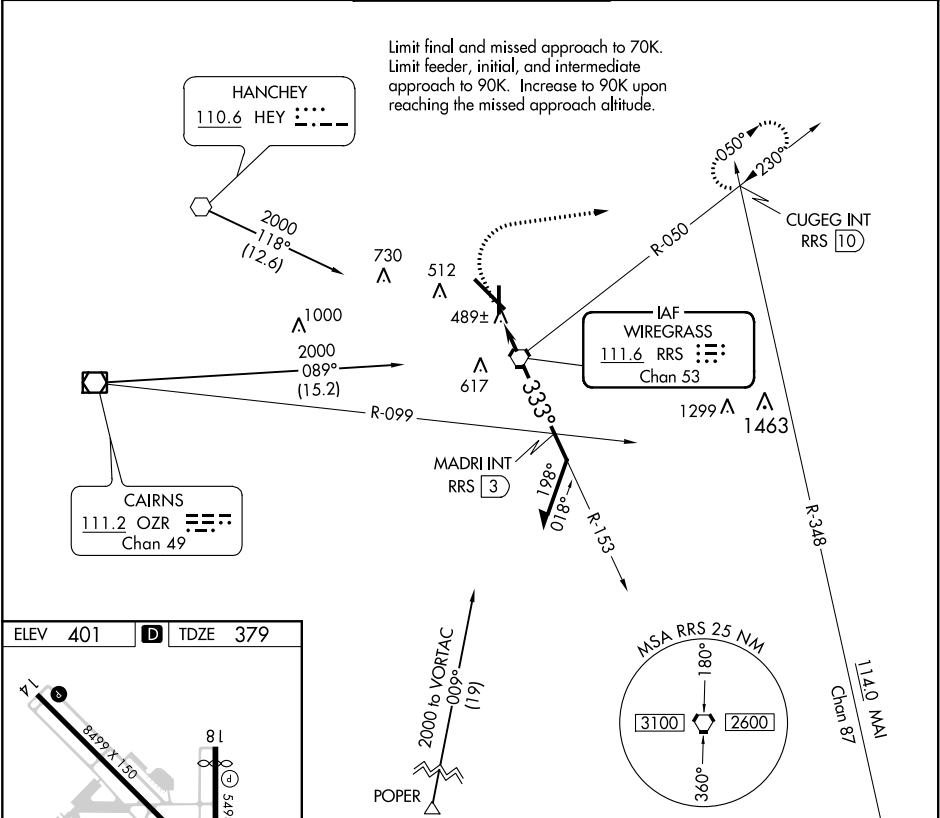
▼

▲

When local altimeter setting not received, use Cairns AAF altimeter setting and increase all MDA 60 feet.

MISSED APPROACH: Climb to 900 then climbing right turn to 2000 on heading 080° and RRS VORTAC R-050 to CUGEG INT/RRS 10 DME and hold.

ATIS 135.725	CAIRNS APP CON ★ 125.4 327.125	DOTHAN TOWER ★ 118.4 (CTAF) 257.6	GND CON 121.7 348.6	UNICOM 122.95
------------------------	--	---	-------------------------------	-------------------------



ELEV 401 TDZE 379

REIL Rwy 18

REIL Rwy 14

HIRL Rwy 18-36

HIRL Rwy 14-32

333° 1.8 NM from FAF

FAF to MAP 1.8 NM	Knots	45	60	75	90	105
Min:Sec	2:24	1:48	1:26	1:12	1:02	

900

2000

RRS R-050

CUGEG INT

RRS VORTAC

153°

2000

2000

1400

333°

1.8 NM

3 NM

COPTER

740-1 361 (400-1)

Remain within 5 NM

MADRI INT RRS 3

5.22° HCH 40