

BIRMINGHAM, ALABAMA

AL-50 (FAA)

19227

APP CRS 183°	Rwy Idg 7099 TDZE 644 Apt Elev 650
------------------------	---

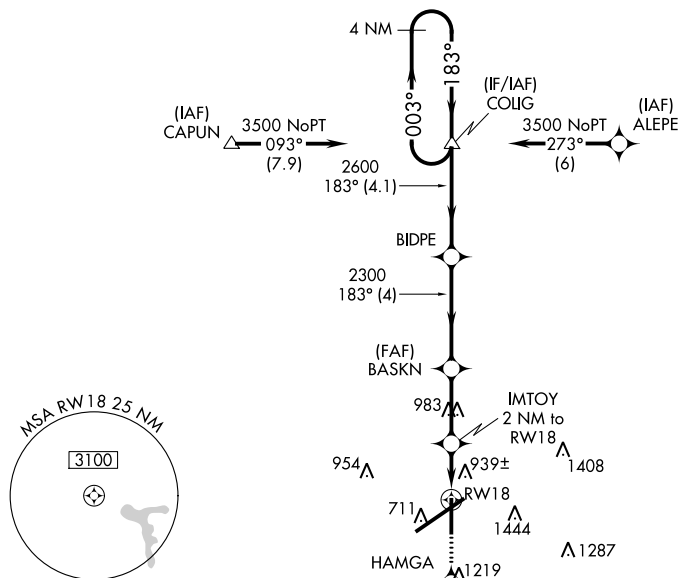
RNAV (GPS) RWY 18

BIRMINGHAM-SHUTTLESWORTH INTL (BHM)

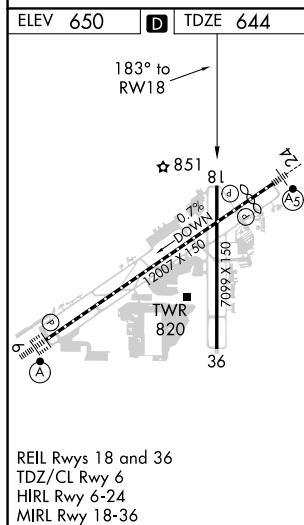
T Rwy 18 helicopter visibility reduction below $\frac{3}{4}$ SM NA.
DME/DME RNP-0.3 NA.

MISSED APPROACH: Climb to 3800 direct HAMGA and on track 141° to HANDE and hold.

ATIS	BIRMINGHAM APP CON	BIRMINGHAM TOWER	GND CON	CLNC DEL
119.4 270.1	123.8 256.8	119.9 317.725	121.7 348.6	125.675 305.2



2065 A



BIRMINGHAM, ALABAMA
Amdt 1B 02MAR17

BIRMINGHAM-SHUTTLESWORTH INTL (BHM)

33°34'N-86°45'W

RNAV (GPS) RWY 18

SE-4, 31 DEC 2020 to 28 JAN 2021

