

NDB EMR	APP CRS	Rwy Idg	3407
385	104°	TDZE	422
		Apt Elev	422

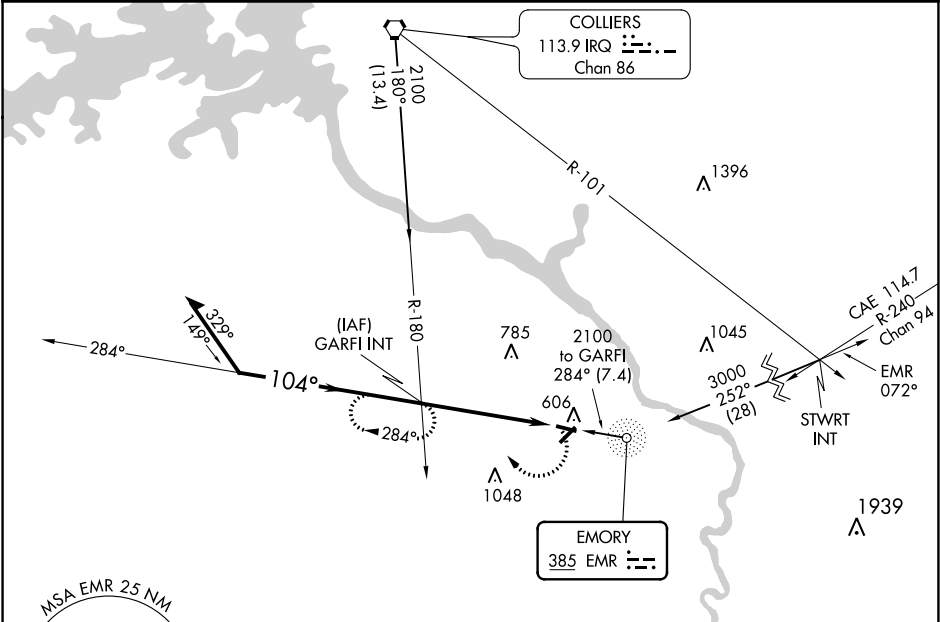
NDB RWY 11  
DANIEL FIELD (DNL)

**ASR**

Helicopter visibility reduction below 1 SM NA. When local altimeter setting not received, use Augusta Rgnl at Bush Field altimeter setting and increase all MDA 60 feet and increase S-11 and Circling Cats C and D visibility ¼ mile. Procedure NA at night.

MISSED APPROACH: Climbing right turn to 2100 heading 335° and EMR 284° bearing to GARFI INT and hold.

ASOS 135.275	AUGUSTA APP CON ★ 126.8 270.3	UNICOM 123.05 (CTAF) 0
-----------------	----------------------------------	---------------------------



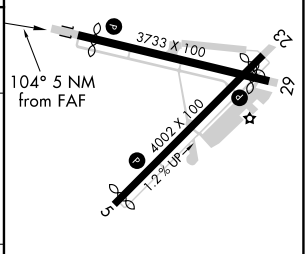
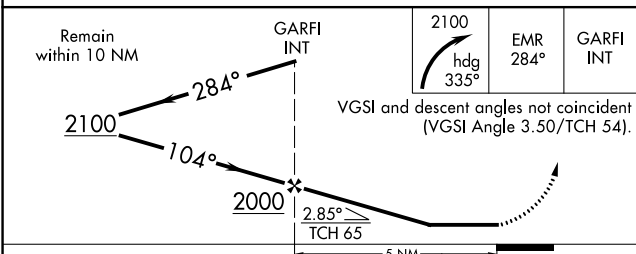
ELEV 422

TDZE 422

REIL Rwy 11 0

MRL Rwy 5-23 and 11-29 0

FAF to MAP 5 NM



CATEGORY	A	B	C	D
S-11	1040-1	618 (700-1)	1040-1¾ 618 (700-1¾)	1040-2 618 (700-2)
CIRCLING	1040-1	618 (700-1)	1400-3	978 (1000-3)

Knots	60	90	120	150	180
Min:Sec	5:00	3:20	2:30	2:00	1:40

SE-4, 31 DEC 2020 to 28 JAN 2021

SE-4, 31 DEC 2020 to 28 JAN 2021