

WAAS CH 90328 W08A	APP CRS 082°	Rwy Idg TDZE Apt Elev	6002 137 146
----------------------------------------	------------------------	-----------------------------	-----------------------------------------

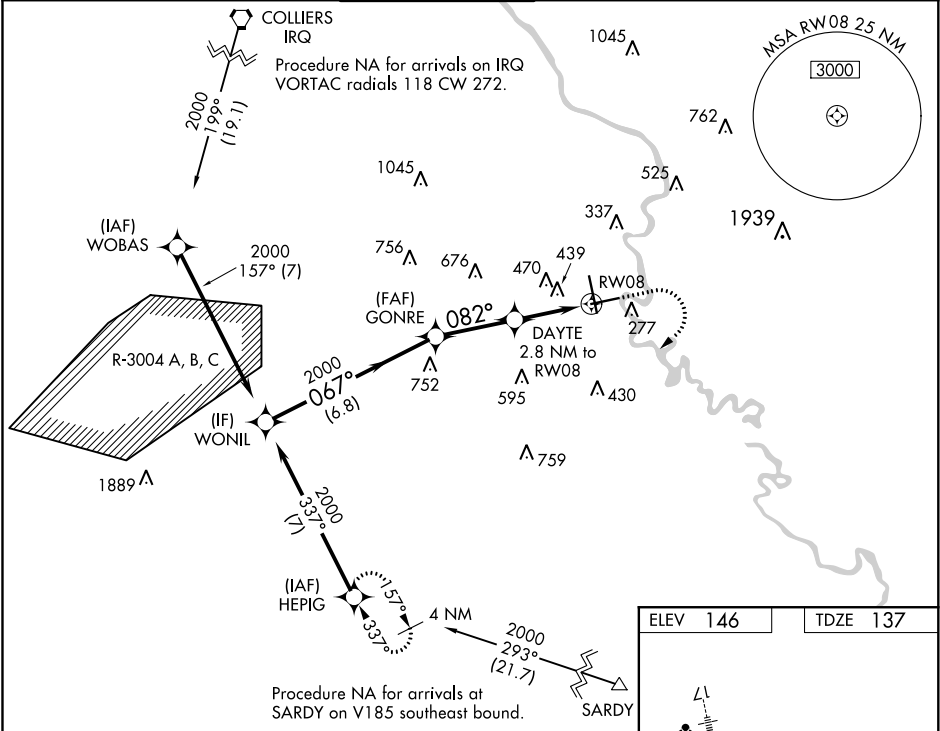
RNAV (GPS) Z RWY 8
AUGUSTA RGNL AT BUSH FIELD (AGS)

RNP APCH.

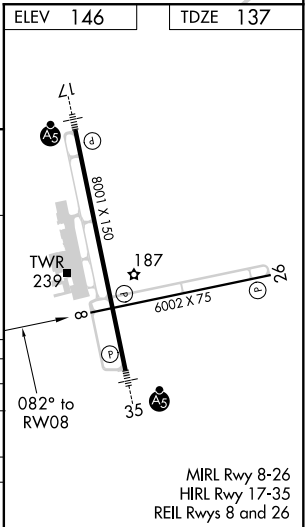
Baro-VNAV and VDP NA when using Daniel Field altimeter setting. For uncompensated Baro-VNAV systems, LNAV/VNAV NA below -15°C or above 54°C. Rwy 8 helicopter visibility reduction below 3/4 SM NA. When local altimeter setting not received, use Daniel Field altimeter setting and increase LPV DA to 724 feet and LNAV/VNAV DA to 829 feet and all MDA 60 feet; increase LNAV Cats C/D visibility 1/8 SM and Circling Cats C/D visibility 1/4 SM.

MISSED APPROACH:
Climb to 1200 then
climbing right turn to
2000 direct HEPIG
and hold.

ATIS 132.75	AUGUSTA APP CON ★ 126.8 270.3	AUGUSTA TOWER ★ 118.7 (CTAF) 0 239.3	GND CON 121.9 348.6	CLNC DEL 118.65	UNICOM 122.95
-----------------------	-----------------------------------------	------------------------------------------------	-------------------------------	---------------------------	-------------------------



VGSI and RNAV glidepath not coincident (VGSI Angle 3.00/TCH 64).			
WONIL		1200	2000 HEPIG
GONRE		2000	
DAYTE		2.8 NM to RW08	
GP 3.00° TCH 55		*1.6 NM to RW08	*LNAV only.
2000 067°		2000 082°	
2000		*1080	
6.8 NM		2.9 NM	1.2 NM 1.6 NM
CATEGORY	A	B	C D
LPV DA	669-13/4 532 (600-13/4)		
LNAV/VNAV DA	774-21/4 637 (700-21/4)		
LNAV MDA	700-1 563 (600-1)	700-15/8 563 (600-15/8)	
CIRCLING	780-1 634 (700-1)	780-13/4 634 (700-13/4)	900-21/2 754 (800-21/2)



SE-4, 31 DEC 2020 to 28 JAN 2021

SE-4, 31 DEC 2020 to 28 JAN 2021