

WAAS CH 77504 W17A	APP CRS 172°	Rwy Idg TDZE 146 Apt Elev 146	8001
--	------------------------	---	-------------

RNAV (GPS) RWY 17

AUGUSTA RGNL AT BUSH FIELD (AGS)

RNP APCH.

⚠

For uncompensated Baro-VNAV systems, LNAV/VNAV NA below -8°C or above 54°C. When local altimeter setting not received, use Daniel Field altimeter setting and increase all DA 55 feet and all MDA 60 feet; increase LNAV and Circling Cats C/D visibility ¼ SM. Baro-VNAV and VDP NA when using Daniel Field altimeter setting. For inop ALS when using Daniel Field altimeter setting, increase LNAV Cats C/D visibility to 1¼ SM.

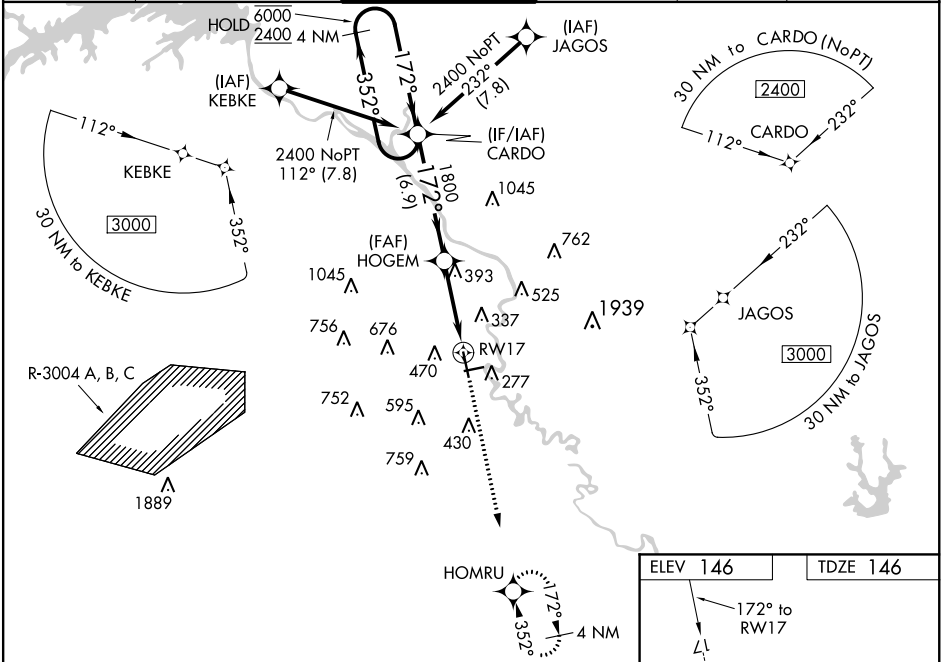
MALSR

AS

⬆

MISSED APPROACH:
Climb to 2100 direct
HOMRU and hold.

ATIS 132.75	AUGUSTA APP CON ★ 126.8 270.3	AUGUSTA TOWER ★ 118.7 (CTAF) 0 239.3	GND CON 121.9 348.6	CLNC DEL 118.65	UNICOM 122.95
-----------------------	---	--	-------------------------------	---------------------------	-------------------------



4 NM Holding Pattern		VGSI and RNAV glidepath not coincident (VGSI Angle 3.00/TCH 71).		2100	HOMRU
6000 2400		CARDO		HOGEM	
GP 3.00° TCH 56		172°		*1.5 NM to RW17	
6.9 NM		3.5 NM		1.5 NM	
CATEGORY	A	B	C	D	
LPV DA		350/24	204 (300-½)		
LNAV/VNAV DA		518/40	372 (400-¾)		
LNAV MDA	700/24	554 (600-½)	700/60	554 (600-1¼)	
CIRCLING	780-1	634 (700-1)	780-1¾ 634 (700-1¾)	900-2½ 754 (800-2½)	

ELEV 146

TDZE 146

172° to RW17

800 X 150

187

6002 X 75

35

26

8

239

MIRL Rwy 8-26
HIRL Rwy 17-35
REIL Rws 8 and 26