

WAAS CH 99300 W08B	APP CRS 095°	Rwy Idg TDZE 1015 Apt Elev 1026
--	------------------------	---

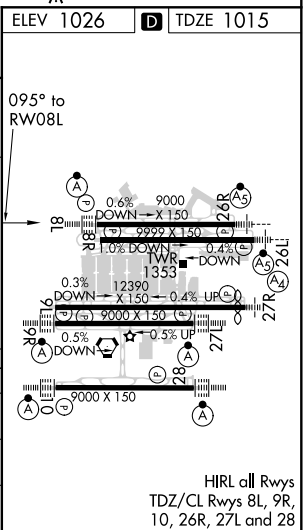
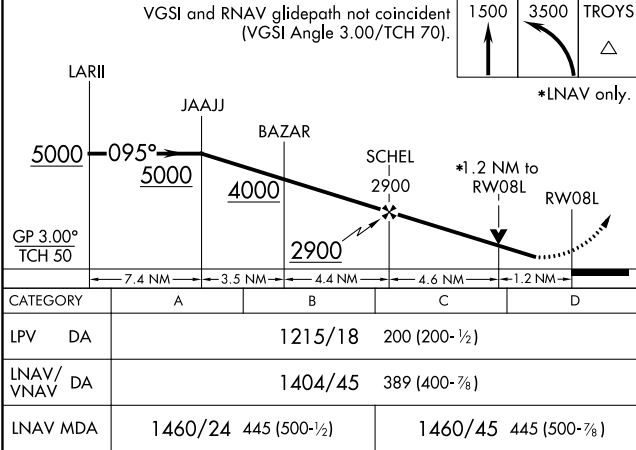
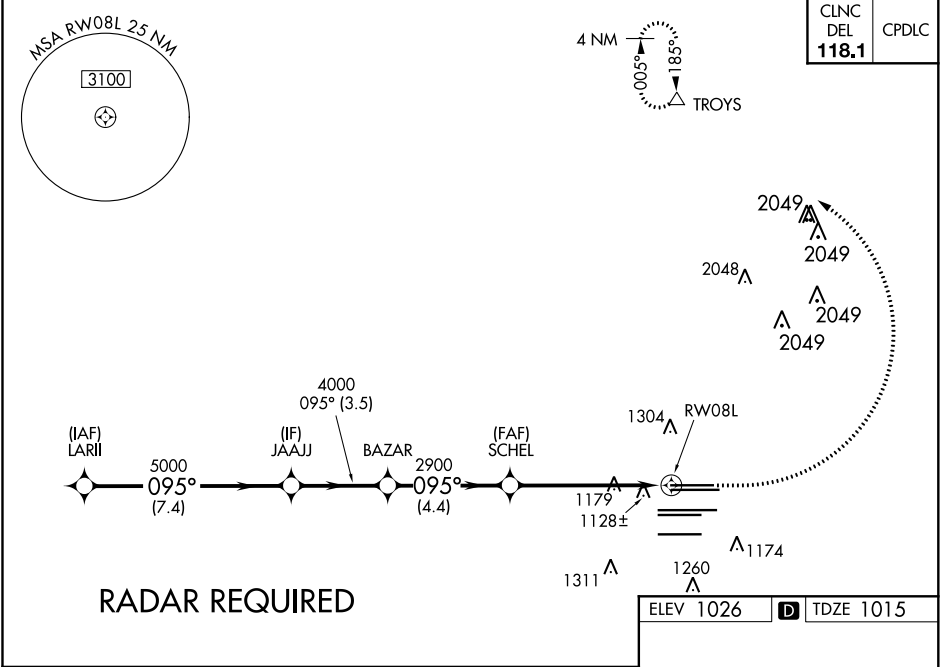
RNAV (GPS) Y RWY 8L
HARTSFIELD-JACKSON ATLANTA INTL (ATL)

⚠ For uncompensated Baro-VNAV systems, LNAV/VNAV NA below -7°C (20°F) or above 54°C (130°F). DME/DME RNP-0.3 NA. For inop ALSF-2, increase LNAV/VNAV all Cats visibility to 1¼ miles. Helicopter visibility reduction below RVR 4000 NA. LNAV procedure NA during simultaneous operations. Simultaneous approach authorized with Rwy 9L or 9R or 10, or Rwy 8L and 10. Use of FD or AP providing RNAV track guidance required during simultaneous operations.

ALSF-2

MISSED APPROACH:
Climb to 1500 then climbing left turn to 3500 direct TROYS and hold.

D-ATIS ARR 119.65 DEP 125.55	ATLANTA APP CON 127.9 379.9	ATLANTA TOWER 8L-26R 8R-26L 9L-27R 9R-27L 10-28 RWYS 119.1 125.325 123.85 119.3 119.5 254.4						ALL RWYS 121.9	GND CON 121.75	ALL RWYS 121.65 254.4
--	--	--	--	--	--	--	--	-----------------------------	--------------------------	------------------------------------



SE-4, 31 DEC 2020 to 28 JAN 2021

SE-4, 31 DEC 2020 to 28 JAN 2021