

# RNAV (GPS) Y RWY 10

## HARTSFIELD-JACKSON ATLANTA INTL (ATL)

ALSF-2

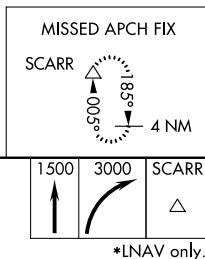
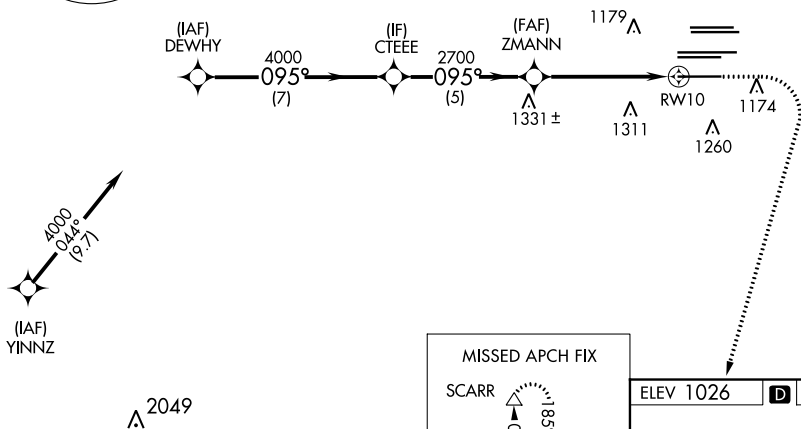
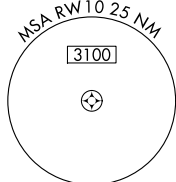
**MISSED APPROACH:** Climb to 1500 then climbing right turn to 3000 direct SCARR and hold.

D-ATIS	ATLANTA	ATLANTA TOWER						GND CON			
ARR	APP CON	8L-26R	8R-26L	9L-27R	9R-27L	10-28	ALL RWYS	(8L-26R,8R-26L)	(9L-27R,9R-27L)	10-28	ALL RWYS
119.65											
DEP	127.9	119.1	125.325	123.85	119.3	119.5	254.4	121.9	121.75	121.65	254.4

## RADAR REQUIRED

2048  $\Delta$ 

CLNC DEL 118.1	CPDLC
----------------------	-------



DEWHY CTEEE ZMANN

4000 095° 4000 2700

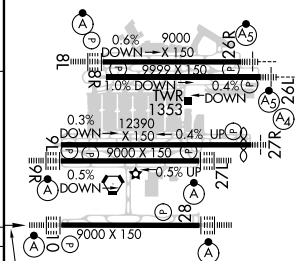
GP 3.00° TCH 55

7 NM 5 NM 3.9 NM 1.3 NM

\*1.3 NM to RW10

RW10

CATEGORY	A	B	C	D
LPV DA	1200/18	200 (200-½)		
RNAV/VNAV DA	1455/55	455 (500-1)		
RNAV MDA	1480/24	480 (500-½)	1480/50	480 (500-1)



HIRL all Rwy's  
TDZ/CL Rwy's 8L, 9R, 10, 26R,  
27L and 28