

ATLANTA, GEORGIA

AL-26 (FAA)

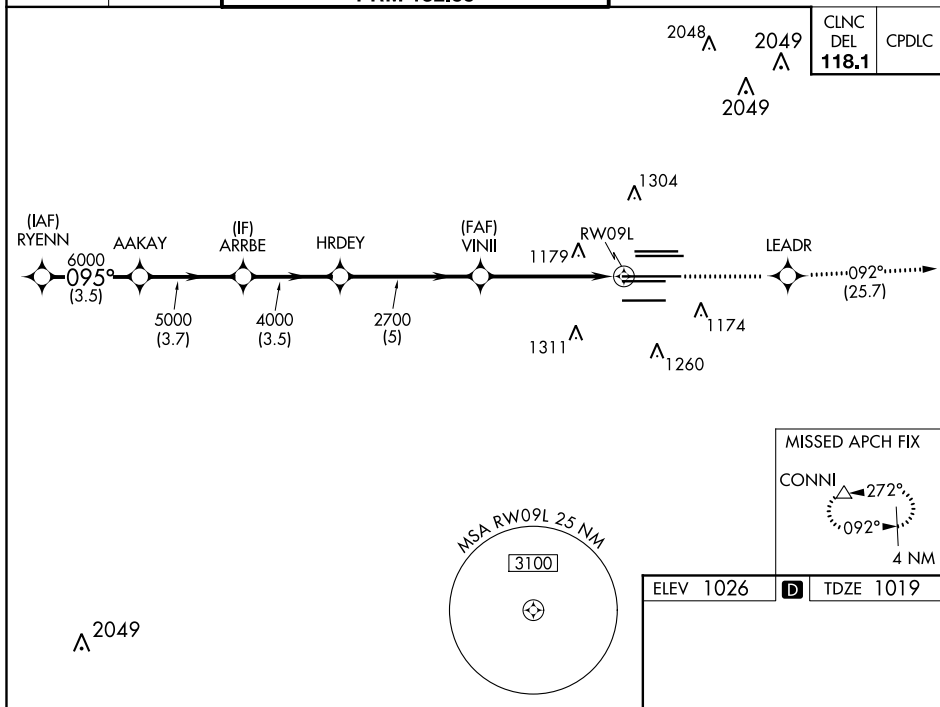
A) RNAV (GPS) PRM RWY 9L
(SIMULTANEOUS CLOSE PARALLEL)
HARTSFIELD-JACKSON ATLANTA INTL (ATL)

WAAS CH 62800 W09D	APP CRS 095°	Rwy Idg 11730 TDZE 1019 Apt Elev 1026
----------------------------------------	------------------------	------------------------------------------------------------------

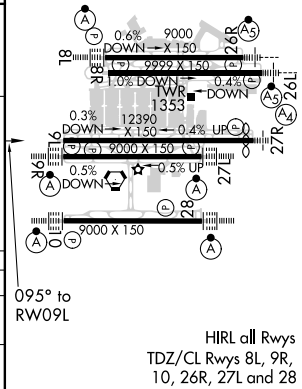
RNP APCH.

T For uncompensated Baro-VNAV systems, LNAV/VNAV NA below -7°C or above 54°C. Simultaneous approach authorized. Use of FD or AP required during simultaneous operations. Dual VHF Comm required. See additional requirements on AAUP.

MISSED APPROACH: Climb to 4000 direct LEADR and on track 092° to CONN and hold.

[illegible]

VGS1 and RNAV glidepath not coincident (VGS1 Angle 3.00/TCH 71).					4000 	LEADR 	tr 092°	CONNI
CATEGORY		A		B	C	D		
LPV DA				1359/50	340 (400-1)			
LNAV/ VNAV DA				1405/60	386 (400-1¼)			



ATLANTA, GEORGIA
Orig-E 26MAR20

33°38'N-84°26'W

HARTSFIELD-JACKSON ATLANTA INTL (ATL)

RNAV (GPS) PRM RWY 9L (SIMULTANEOUS CLOSE PARALLEL)

SE-4, 31 DEC 2020 to 28 JAN 2021

SE-4, 31 DEC 2020 to 28 JAN 2021