

ATLANTA, GEORGIA

AL-26 (FAA)

RNAV (GPS) PRM RWY 27R  
(SIMULTANEOUS CLOSE PARALLEL)  
HARTSFIELD-JACKSON ATLANTA INTL (ATTN: 404-255-0000)

WAAS CH <b>70400</b> <b>W27B</b>	APP CRS <b>275°</b>	Rwy Idg <b>11690</b> TDZE <b>985</b> Apt Elev <b>1026</b>
--	------------------------	---

**T** For uncompensated Baro-VNAV systems, INAV/VNAV NA below -7°C (20°F) or above 54°C (130°F). DME/DME RNP-0.3 NA. Simultaneous close parallel approach authorized with ILS PRM and RNP PRM Rwy 26R or 26L or 28, or Rwy 26R and 28, or Rwy 26L and 28. Dual VHF Comm required. Use of FD or AP providing RNAV track guidance required during simultaneous operations. See additional requirements on AAPP. For inop MALS, increase INAV/VNAV Cat D visibility to 1½ miles. Inop table does not apply to LPV, all Cats.

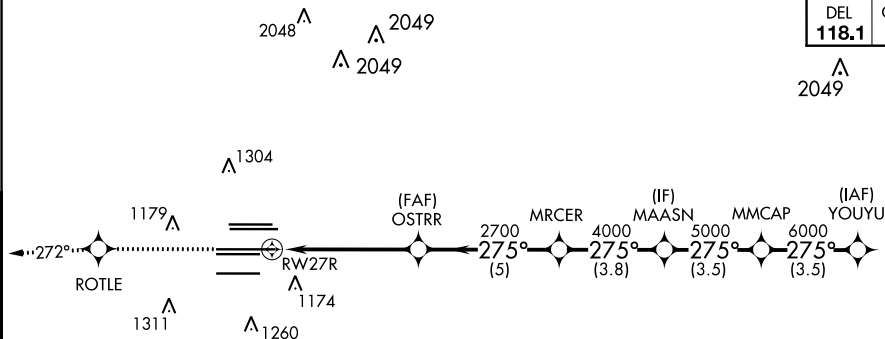
MALS

Ⓐ 三

**MISSED APPROACH:** Climb to 4000 direct ROTLE and on track 272° to TEMPO and hold.

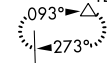
D-ATIS	ATLANTA	ATLANTA TOWER						ALL	GND CON				ALL
ARR 119.65	APP CON	8L-26R	8R-26L	9L-27R	9R-27L	10-28	RWYS		(8L-26R,8R-26L)	(9L-27R,9R-27L)	10-28	RWYS	
DEP 125.55	127.9 379.9	119.1	125.325	123.85	119.3	119.5	254.4		121.9	121.75	121.65	254.4	
		PRM 132.55											

CLNC DEL <b>118.1</b>	CPDLC
-----------------------------	-------



### MISSED APCH FIX

TEMPC



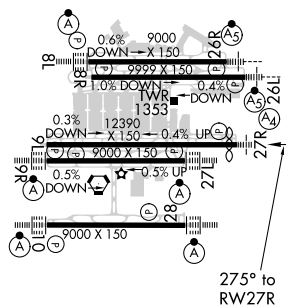
4 NM
ELEV 1026



TDZE 985



## RADAR REQUIRED



HIRL all Rwys  
TDZ/CL Rwys 8L, 9R,  
10, 26R, 27L and 28

33°38'N-84°26'W

HARTSFIELD-JACKSON ATLANTA INTL (ATL)

RNAV (GPS) PRM RWY 27R (SIMULTANEOUS CLOSE PARALLEL)

SE-4, 31 DEC 2020 to 28 JAN 2021