

RNAV (GPS) PRM RWY 26L  
(SIMULTANEOUS CLOSE PARALLEL)  
HARTSFIELD-JACKSON ATLANTA INTL (ATL)

WAAS CH <b>56300</b> <b>W26A</b>	APP CRS <b>275°</b>	Rwy Idg <b>9999</b> TDZE <b>996</b> Apt Elev <b>1026</b>
--	------------------------	--

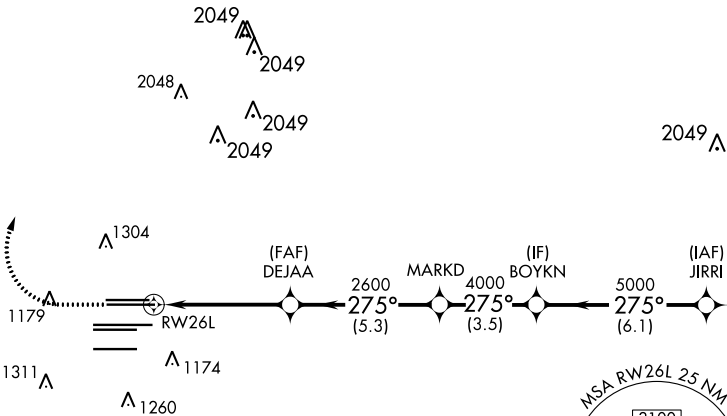
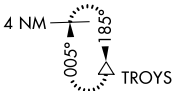
For uncompensated Baro-VNAV systems, LNAV/VNAV NA below -7°C (20°F) or above 54°C (130°F). DME/DME RNP-0.3 NA. For inop MALSR, increase LPV all Cats visibility to RVR 4500 and LNAV/VNAV all Cats visibility to RVR 6000. Simultaneous close parallel approach authorized with ILS PRM and RNAV PRM Rwy 27R or 27L or 28, or Rwy 27R and 28, or Rwy 27L and 28. Dual VHF Comm required. Use of FD or AP providing RNAV track guidance required during simultaneous operations. See additional requirements on AAUP.



MISSED APPROACH:  
Climb to 1500 then  
climbing right turn to  
3500 direct TROYS  
and hold.

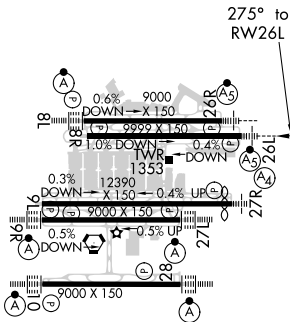
D-ATIS ARR <b>119.65</b> DEP <b>125.55</b>	ATLANTA APP CON <b>127.9 379.9</b>	ATLANTA TOWER ALL 8L-26R 8R-26L 9L-27R 9R-27L 10-28 RWYS <b>119.1 125.325 123.85 119.3 119.5 254.4</b> <b>PRM 126.9</b>	GND CON (8L-26R, 8R-26L) (9L-27R, 9R-27L) 10-28 <b>121.9 121.75 121.65 254.4</b>	ALL RWYS <b>254.4</b>
--	--	---	--	-----------------------------

CLNC DEL <b>118.1</b>	CPDLC
-----------------------------	-------



ELEV 1026 D TDZE 996

RADAR REQUIRED



1500	3500	TROYS	VGSI and RNAV glidepath not coincident (VGSI Angle 3.00/TCH 63).	
DEJAA		MARKD	BOYKN	JIRRI
RW26L		2600	4000	5000
275° to RW26L		275°	275°	275°
4.9 NM		5.3 NM	3.5 NM	6.1 NM
CATEGORY	A	B	C	D
LPV	DA	1281/24	285 (300-½)	
LNAV/VNAV	DA	1360/35	364 (400-½)	

HIRL all Rwy  
TDZ/CL Rwy 8L, 9R, 10, 26R,  
27L and 28

RNAV (GPS) PRM RWY 26L (SIMULTANEOUS CLOSE PARALLEL)