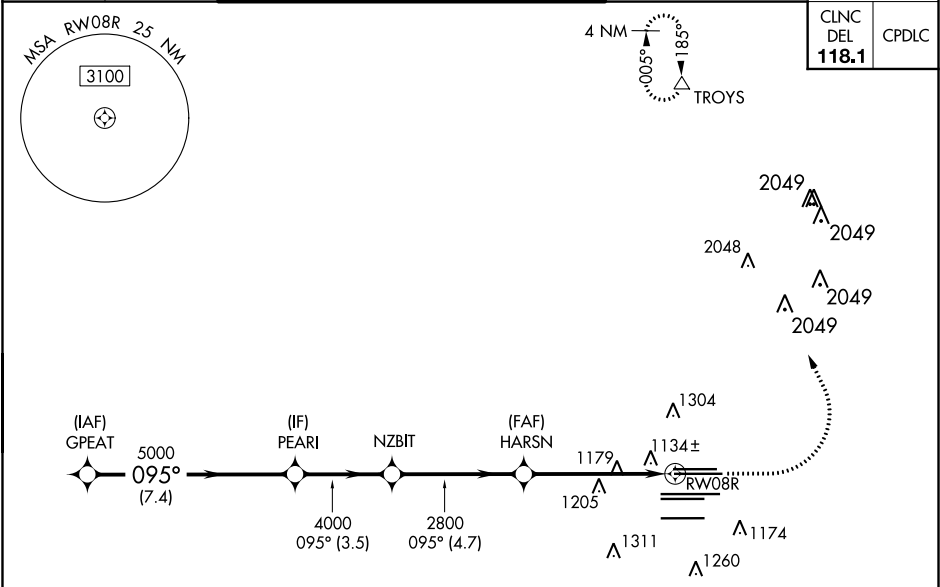


WAAS CH 48800 W08D	APP CRS 095°	Rwy Idg TDZE 1024 Apt Elev 1026
--	------------------------	---

RNAV (GPS) RWY 8R
HARTSFIELD-JACKSON ATLANTA INTL (ATL)

RNP APCH.	For uncompensated Baro-VNAV systems, LNAV/VNAV NA below -7°C, or above 54°C. Simultaneous approach authorized with Rwy 9L or 9R or 10. LNAV procedure NA during simultaneous operations. Use of FD or AP providing RNAV track guidance required during simultaneous operations.	MISSED APPROACH: Climb to 1500 then climbing left turn to 3500 direct TROYS and hold.
-----------	---	---

D-ATIS ARR 119.65 DEP 125.55	ATLANTA APP CON 127.9 379.9	ATLANTA TOWER 8L-26R 8R-26L 9L-27R 9R-27L 10-28 RWYS 119.1 125.325 123.85 119.3 119.5 254.4 PRM 126.9	ALL RWYS 121.9 121.75 121.65 254.4
--	--	--	---



RADAR REQUIRED		ELEV 1026 D TDZE 1024
VGSi and RNAV glidepath not coincident (VGSi Angle 3.00/TCH 67°).		1500 3500 TROYS
GPEAT PEARL NZBIT HARSN RWY 08R		095° to RWY 08R
5000 095° 5000 4000 2800 2800 1.2 NM to RWY 08R		*LNAV only.
GP 3.00° TCH 53		
CATEGORY	A B C D	
LPV DA	1282/40 258 (300-¾)	
LNAV/VNAV DA	1516-1⅓ 492 (500-1⅓)	
LNAV MDA	1480/55 456 (500-1)	1480-1⅓ 456 (500-1⅓)