

WAAS CH <b>56300</b> <b>W26A</b>	APP CRS <b>275°</b>	Rwy Idg <b>9999</b> TDZE <b>996</b> Apt Elev <b>1026</b>
--	------------------------	--

RNAV (GPS) RWY 26L

HARTSFIELD-JACKSON ATLANTA INTL (ATL)

▼

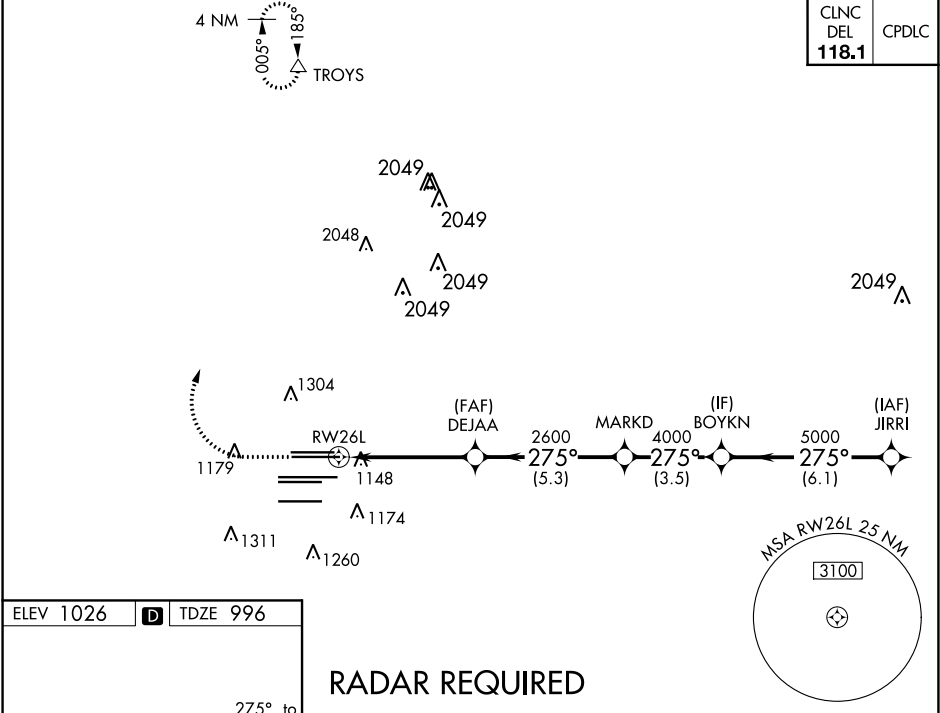
For uncompensated Baro-VNAV systems, LNAV/VNAV NA below -7°C (20°F) or above 54°C (130°F). DME/DME RNP-0.3 NA. For inop MALSR, increase LPV alt Cats visibility to RVR 4500, LNAV/VNAV all Cats visibility to RVR 6000. Simultaneous approach authorized with Rwy 27L or 27R or 28. LNAV procedure NA during simultaneous operations. Use of FD or AP providing RNAV track guidance required during simultaneous operations.

MALSR

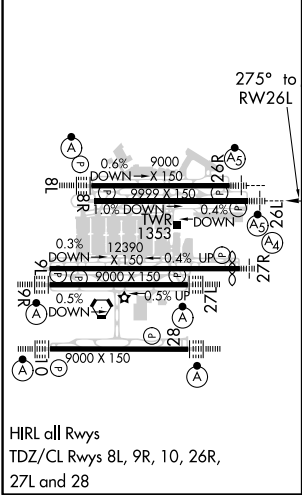
MISSED APPROACH:

Climb to 1500 then climbing right turn to 3500 direct TROYS and hold.

D-ATIS ARR <b>119.65</b> DEP <b>125.55</b>	ATLANTA APP CON <b>127.9 379.9</b>	ATLANTA TOWER 8L-26R 8R-26L 9L-27R 9R-27L 10-28 RWYS <b>119.1 125.325 123.85 119.3 119.5 254.4</b>						ALL RWYS <b>121.9</b>	GND CON (8L-26R,8R-26L) (9L-27R,9R-27L) 10-28 <b>121.75 121.65 254.4</b>	ALL RWYS
--	--	--	--	--	--	--	--	-----------------------------	--	-------------



ELEV 1026	<b>D</b>	TDZE 996
-----------	----------	----------



RADAR REQUIRED

1500	3500	TROYS	VGSI and RNAV glidepath not coincident (VGSI Angle 3.00/TCH 63).	
↑	↷	△	BOYKN	JIRRI
*LNAV only.				
*1.3 NM to RW26L				
RW26L				
DEJAA				
2600				
MARKD				
4000				
5000				
275°				
5000				
GP 3.00° TCH 52				
1.3 3.6 NM 5.3 NM 3.5 NM 6.1 NM				
CATEGORY	A	B	C	D
LPV	DA	1281/24	285 (300-½)	
LNAV/VNAV	DA	1360/35	364 (400-⅝)	
LNAV MDA	1460/24	464 (500-½)	1460/50	464 (500-1)

SE-4, 31 DEC 2020 to 28 JAN 2021

SE-4, 31 DEC 2020 to 28 JAN 2021