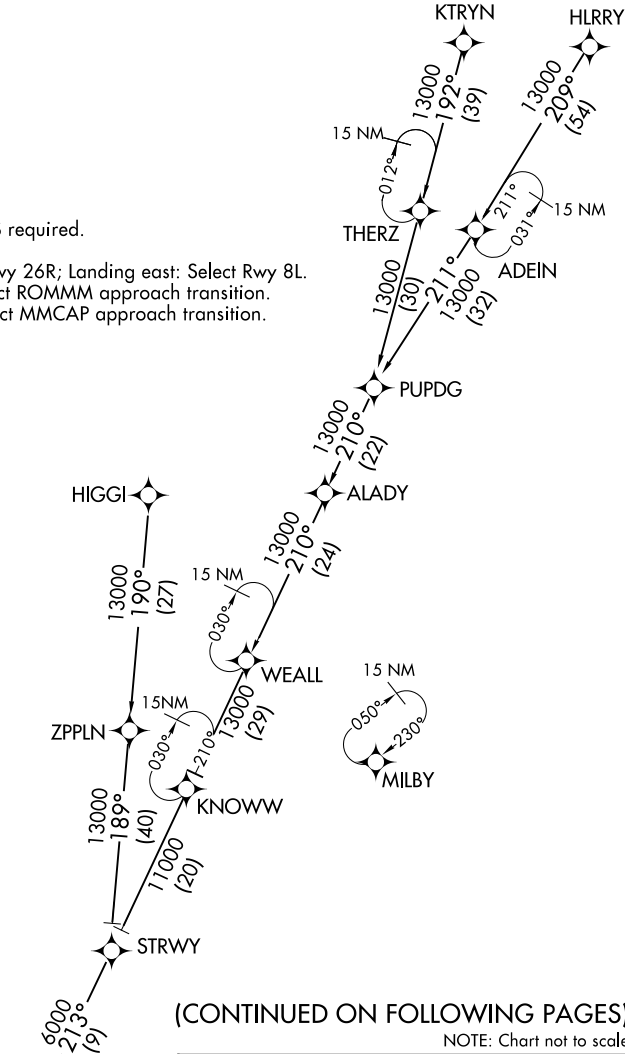


D-ATIS ARR
119.65
ATLANTA APP CON
128.525 379.9

- NOTE: RADAR required.
NOTE: RNAV 1.
NOTE: DME/DME/IRU or GPS required.
NOTE: Turbojet aircraft only.
NOTE: Landing west: Select Rwy 26R; Landing east: Select Rwy 8L.
NOTE: Landing Rwy 27L: Select ROMMM approach transition.
NOTE: Landing Rwy 27R: Select MMCAP approach transition.



SE-4, 31 DEC 2020 to 28 JAN 2021

SE-4, 31 DEC 2020 to 28 JAN 2021