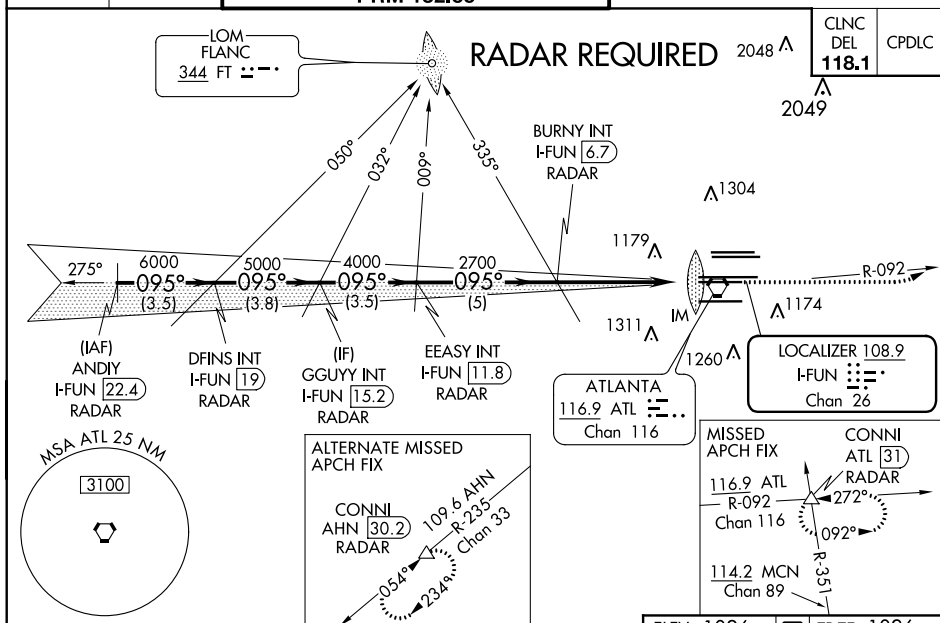


ILS PRM RWY 9R (CAT II & III)  
(SIMULTANEOUS CLOSE PARALLEL)  
HARTSFIELD-JACKSON ATLANTA INTL (ATL)

ALSF-2

**MISSED APPROACH:** Climb to 1500 then climbing left turn to 4000 on ATL VORTAC R-092 to CONNI INT/ATL 31 DME/RADAR and hold.

D-ATIS	ATLANTA	ATLANTA TOWER						ALL	
ARR <b>119.65</b>	APP CON	8L-26R	8R-26L	9L-27R	9R-27L	10-28	RWYS	GND CON	ALL
DEP <b>125.55</b>	<b>127.9 379.9</b>	<b>119.1</b>	<b>125.325</b>	<b>123.85</b>	<b>119.3</b>	<b>119.5</b>	<b>254.4</b>	(8L-26R,8R-26L) (9L-27R,9R-27L)	10-28 RWYWS
				<b>PRM 132.55</b>				<b>121.9</b>	<b>121.75 121.65 254.4</b>



VGSI and ILS glidepath not coincident  
(VGSI Angle 3.00/TCH 70).

ANDY I-FUN 22.4  
RADAR

DFINS INT I-FUN 19  
RADAR

GGUYY INT I-FUN 15.2  
RADAR

EEASY INT I-FUN 11.8  
RADAR

BURNY INT I-FUN 6.7  
RADAR

1500  
↑

4000  
ATL  
R-092

CONN  
△

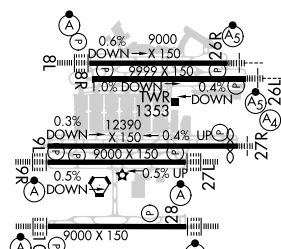
7000  
095°  
6000  
5000  
4000  
2700  
2700  
IM 1125  
1152

GS 3.00°  
TCH 55

3.5 NM 3.8 NM 3.5 NM 5 NM 5.1 NM

CATEGORY	A	B	C	D
S-ILS 9R		CAT II	RA 118/12	100 DA 1126
S-ILS 9R		CAT IIIa	RVR 07	
S-ILS 9R		CAT IIIb	RVR 03	
S-ILS 9R		CAT IIIc	NA	

ELEV	1026	<b>D</b>	TDZE	1026
------	------	----------	------	------



HIRL all Rwys  
TDZ/CL Rwys 8L, 9R, 10, 26R,  
27L and 28

HARTSFIELD-JACKSON ATLANTA INTL (ATL)

ILS PRM RWY 9R (CAT II &amp; III) (SIMULTANEOUS CLOSE PARALLEL)

SE-4, 31 DEC 2020 to 28 JAN 2021

SE-4, 31 DEC 2020 to 28 JAN 2021