

LOC/DME I-BRU 108.7 Chan 24	APP CRS 275°	Rwy Idg 9999	26L 8500	26R 990
		TDZE 996		
		Apt Elev 1026	1026	

ILS or LOC RWY 26L
HARTSFIELD-JACKSON ATLANTA INTL (ATL)

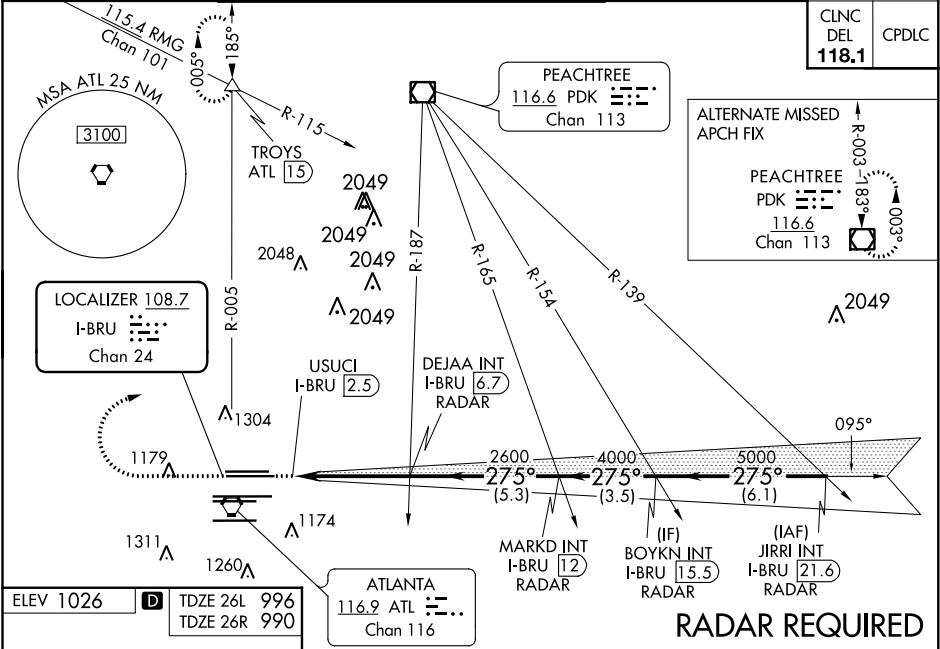
⚠ Inoperative table does not apply to Sidestep Rwy 26R.
For inop MALSR, increase S-ILS 26L visibility all Cats to RVR 4500 and S-LOC 26L Cat E visibility to 1¼.
Simultaneous approach authorized with Rwy 27L or 27R or 28R.

Rwy 26L MALSR

Rwy 26R MALSR

MISSED APPROACH: Climb to 1500 then climbing right turn to 3500 on ATL VORTAC R-005 to TROYS INT/ATL 1.5 DME and hold. (TACAN aircraft climb to 1500 then climbing right turn to 3500 on heading 005° for radar vectors.)

D-ATIS ARR 119.65	ATLANTA APP CON	ATLANTA TOWER	ALL RWYS	GND CON	ALL RWYS
DEP 125.55	127.9 379.9	8L-26R 8R-26L 9L-27R 9R-27L 10-28	119.1 125.325 123.85 119.3 119.5 254.4	(8L-26R,8R-26L) (9L-27R,9R-27L) 10-28	121.9 121.75 121.65 254.4



ELEV 1026	TDZE 26L 996 TDZE 26R 990	275° 4.9 NM from FAF
HIRL all Rwys TDZ/CL Rwys 8L, 9R, 10, 26R, 27L and 28		
FAF to MAP 4.2 NM		
Knots	60	90 120 150 180
Min:Sec	4:12	2:48 2:06 1:41 1:24

CATEGORY	A	B	C	D	E
S-ILS 26L	1280/24 284 (300-½)				
S-LOC 26L	1420/24 424 (400-½)	1420/40 424 (400-¾)			
SIDESTEP 26R	1420/55 430 (400-1)	1420-1½ 430 (400-1½)			

SE-4, 31 DEC 2020 to 28 JAN 2021

SE-4, 31 DEC 2020 to 28 JAN 2021