

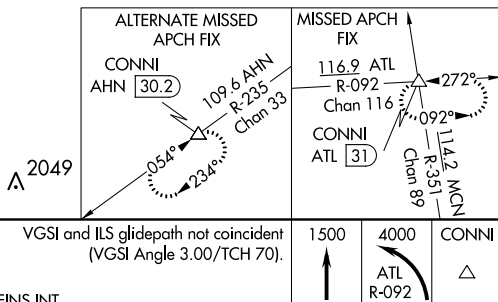
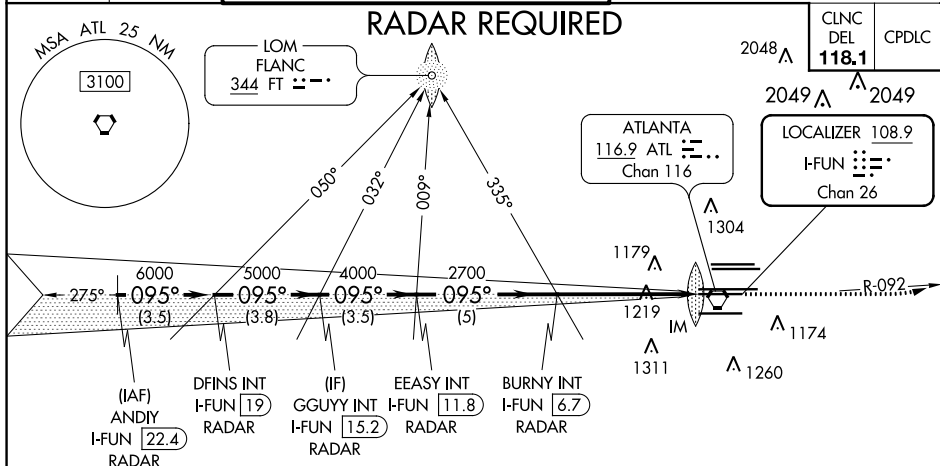
ILS RWY 9R (SA CAT I)  
HARTSFIELD-JACKSON ATLANTA INTL (ATL)

Rwy 9R  
ALSF-2

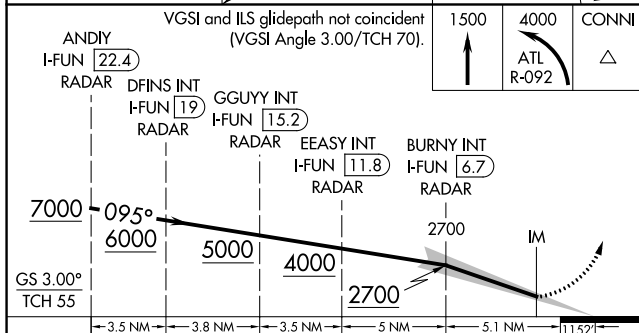
MISSED APPROACH: Climb to 1500 then climbing left turn to 4000 on ATL VORTAC R-092 to CONNI INT/ATL 31 DME and hold.

D-ATIS	ATLANTA APP CON	ATLANTA TOWER						ALL RWYS	GND CON			ALL RWYS
ARR <b>119.65</b>		8L-26R	8R-26L	9L-27R	9R-27L	10-28			(8L-26R, 8R-26L)	(9L-27R, 9R-27L)	10-28	
DEP <b>125.55</b>	<b>127.9</b>	<b>379.9</b>	<b>119.1</b>	<b>125.325</b>	<b>123.85</b>	<b>119.3</b>	<b>119.5</b>	<b>254.4</b>	<b>121.9</b>	<b>121.75</b>	<b>121.65</b>	<b>254.4</b>

## RADAR REQUIRED

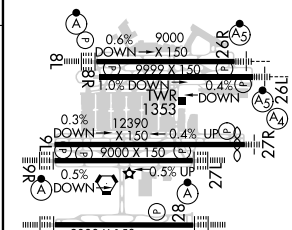


VGSI and ILS glidepath not coincident  
(VGSI Angle 3.00/TCH 70).



CATEGORY	A	B	C	D
S-ILS 9R	RA 196/14 150 DA 1176			

SA CATEGORY I ILS - SPECIAL AIRCREW  
& AIRCRAFT CERTIFICATION REQUIRED



HIRL all Rwys  
TDZ/CL Rwys 8L,  
9R, 10, 26R, 27L and 28