
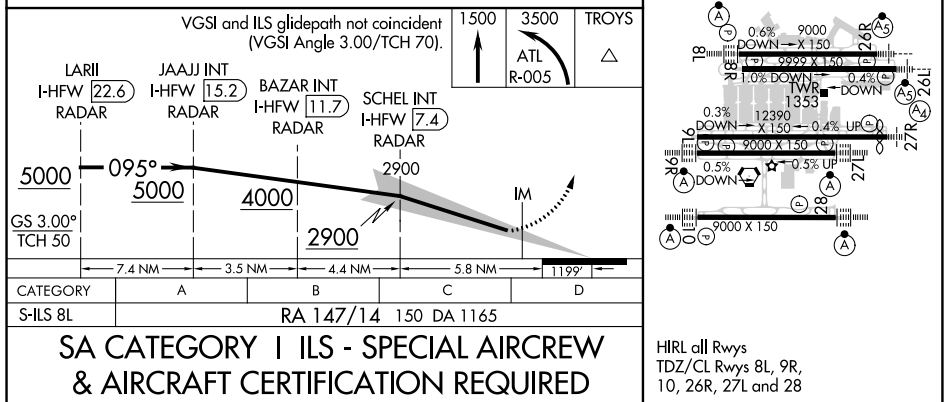


ILS RWY 8L (SA CAT I)
HARTSFIELD-JACKSON ATLANTA INTL (ATL)

ALSF-2 	MISSED APPROACH: Climb to 1500 then climbing left turn to 3500 on ATL VORTAC R-005 to TROYS INT/ATL 15 DME and hold
---	---

ALTERNATE MISSED APCH		CLNC DEL 118.1	CPDLCL
--------------------------	--	-----------------------------	--------



SE-4, 31 DEC 2020 to 28 JAN 2021