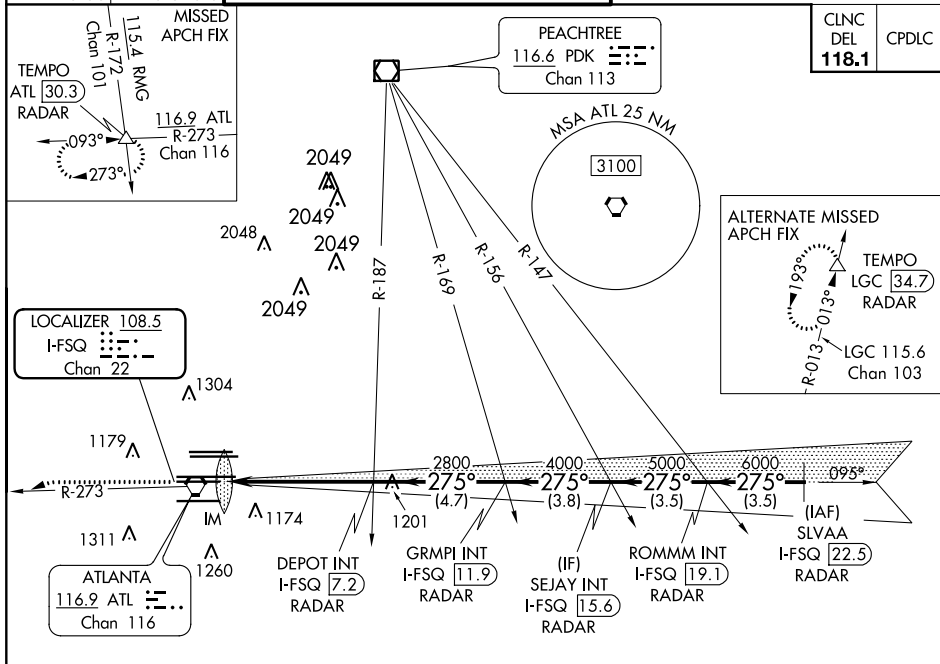


ILS RWY 27L (CAT II)  
HARTSFIELD-JACKSON ATLANTA INTL (ATL)

Simultaneous approach authorized with Rwy 26L or 26R.

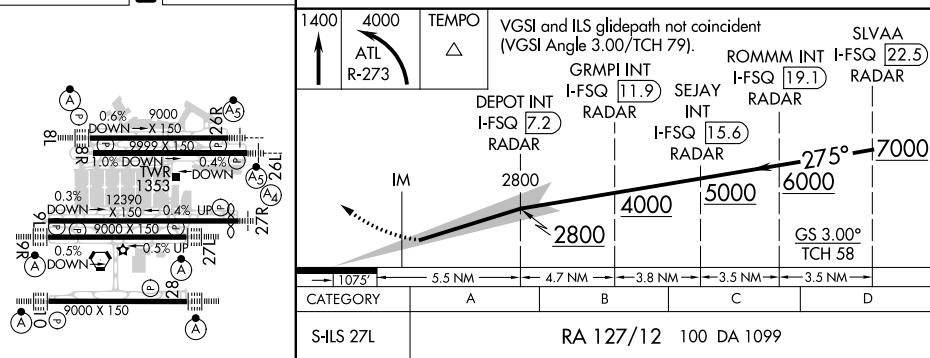
**MISSED APPROACH:** Climb to 1400 then climbing left turn to 4000 on ATL VORTAC R-273 to TEMPO INT/ATL 30.3 DME/RADAR and hold.

|                             |       |
|-----------------------------|-------|
| CLNC<br>DEL<br><b>118.1</b> | CPDLC |
|-----------------------------|-------|



|      |      |          |      |     |
|------|------|----------|------|-----|
| ELEV | 1026 | <b>D</b> | TDZE | 999 |
|------|------|----------|------|-----|

## RADAR REQUIRED



HIRL all Rwy's  
TDZ/CL Rwy's 8L, 9R,  
10, 26R, 27L and 28

CATEGORY II ILS- SPECIAL AIRCREW  
& AIRCRAFT CERTIFICATION REQUIRED

33°38'N-84°26'W

ILS RWY 27L (CAT II)

SE-4, 31 DEC 2020 to 28 JAN 2021