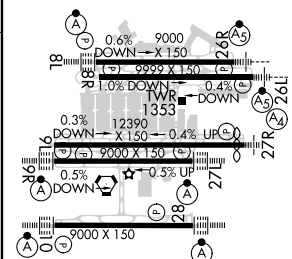


20198

ILS RWY 10 (SA CAT I)
HARTSFIELD-JACKSON ATLANTA INTL (ATL)

MISSED APPROACH: Climb to 1400 then climbing right turn to 3000 on ATL VORTAC R-185 to SCARR INT/ATL 15 DME and hold.

2048 Δ	CLNC DEL 118.1	CPDLC
---------------	-----------------------------	-------



HIRL all Rwy's
TDZ/CL Rwy's 8L,
9R, 10, 26R, 27L and 28

HARTSFIELD-JACKSON ATLANTA INTL (ATL)

33°38'N-84°26'W

ILS RWY 10 (SA CAT I)

SE-4, 31 DEC 2020 to 28 JAN 2021