

BANNG TWO DEPARTURE (RNAV) AL-26 (FAA)

ATLANTA, GEORGIA

D-ATIS 125.55
CLNC DEL 118.1
CPDLC

GND CON

121.9 254

121.75 254.4 (Rwys 9L-27R, 9R-27L)

121.65 254.4 (Rwy 10-28)

ATLANTA TOWER

119.1 254.4 (Rwy 8L-26R)

125.325 254.4 (Rwy 8R-26L)

119.3 254.4 (Rwy 9R-27L)

123.85 254.4 (Rwy 9L-27R)
110.5 254.4 (Rwy 10-28)

119.5 254.4 (Rwy
ATLANTA DEB CON

ATLANTA DEP CON
125 7 281 425 (Buses 91 24B 9B 241)

125.7 281.425 (RWys 8L-28R, 8R-28L)
125.65 281.425 (RWys 8L-27R, 8R-27L)

121 225 281 425 (R_{WY} 10-28)

NOTE: If unable to accept climb rate, advise Clearance Delivery on initial contact.

NOTE: Use departure frequency depicted unless otherwise advised.

NOTE: For Turbojet aircraft only.

NOTE: DME/DME/IRU or GPS Required.

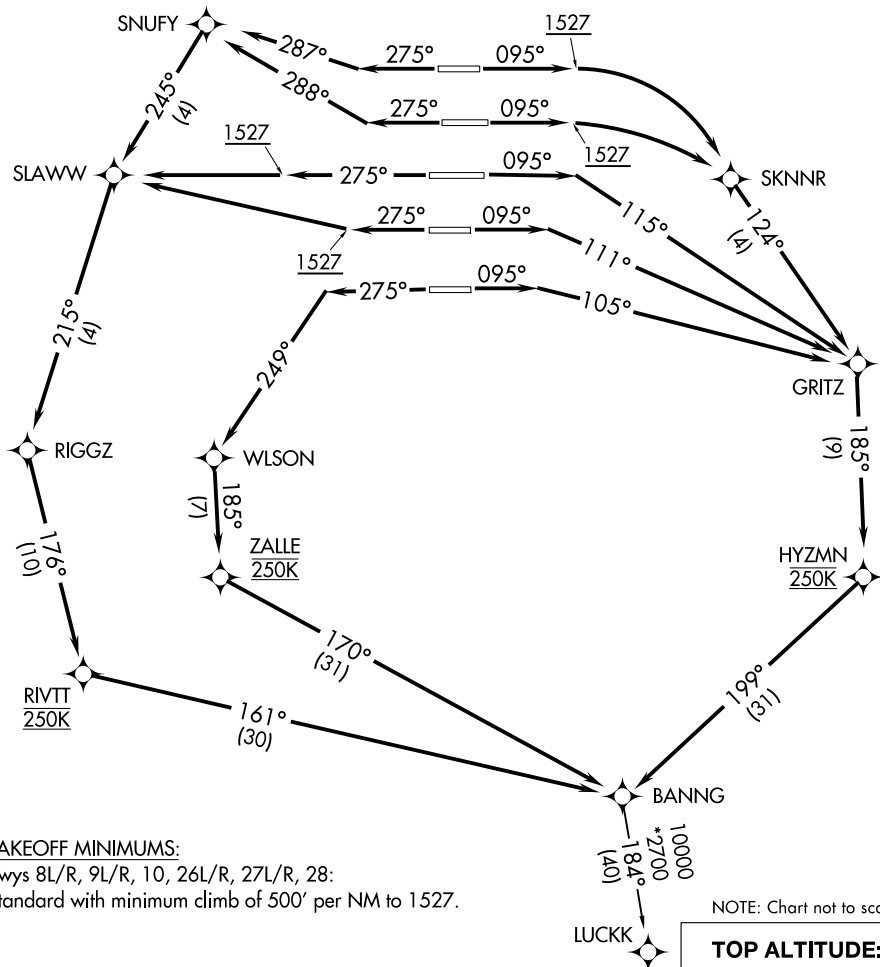
NOTE: RNAV 1.

NOTE: RADAR Required for non-GPS equipped aircraft.

NOTE: Transponder code will be issued via PDC or Atlanta Clearance Delivery.

NOTE: Accelerate to 250K, if unable, advise both tower and Departure Control on initial contact.

NOTE: Aircraft at Midfield Ramps will advise Ramp Towers of departure SID prior to pushback. Upon receipt of ATC clearance (from ATL Clearance Delivery), read back only your call sign and transponder code, unless you have a question.



TAKEOFF MINIMUMS:

Rwys 8L/R, 9L/R, 10, 26L/R, 27L/R, 28:

Standard with minimum climb of 500' per NM to 1527.

NOTE: Chart not to scale.

TOP ALTITUDE:
10000

(NARRATIVE ON FOLLOWING PAGE)

BANING TWO DEPARTURE (RNAV)

(BANNG2.BANNG) 10NOV16

ATLANTA, GEORGIA

HARTSFIELD-JACKSON ATLANTA INTL (ATL)

SE-4, 31 DEC 2020 to 28 JAN 2021