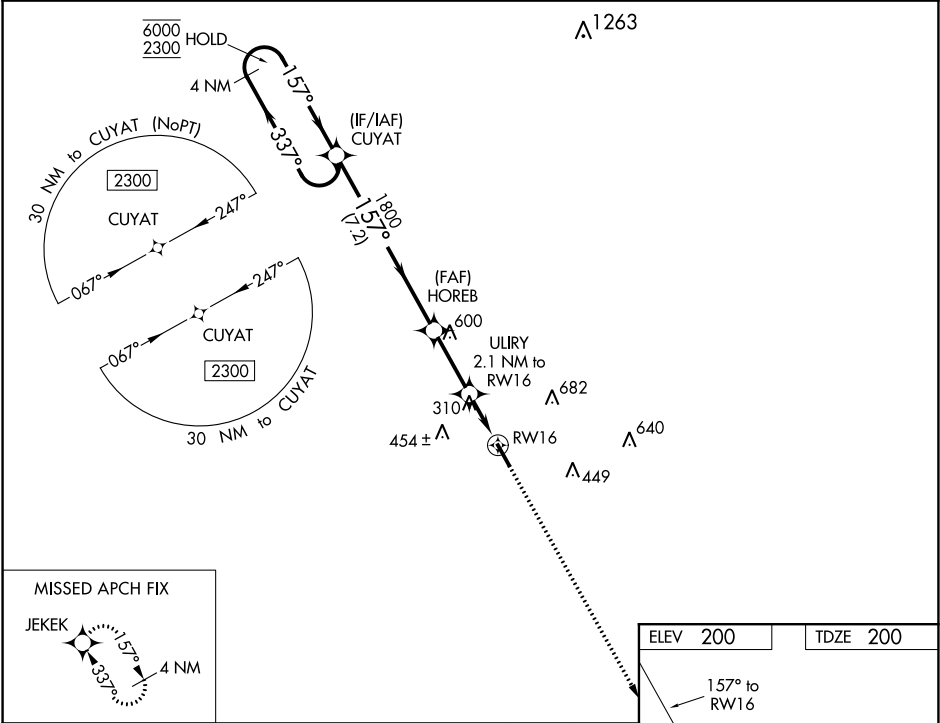


WAAS CH <b>45537</b> <b>W16A</b>	APP CRS <b>157°</b>	Rwy Idg TDZE Apt Elev	<b>5000</b> <b>200</b> <b>200</b>
----------------------------------------	------------------------	-----------------------------	-----------------------------------------

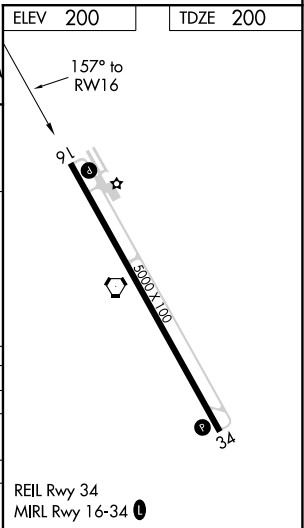
RNAV (GPS) RWY 16  
BACON COUNTY (AMG)

RNP APCH.	MISSED APPROACH: Climb to 2300 direct to JEKEK and hold.
▼ Rwy 16 helicopter visibility reduction below ¾ SM NA. ▲ For uncompensated Baro-VNAV systems, LNAV/VNAV NA below -4°C or above 54°C.	

ASOS <b>118.325</b>	JACKSONVILLE CENTER <b>127.575 269.025</b>	UNICOM <b>122.7 (CTAF) 0</b>
------------------------	-----------------------------------------------	---------------------------------



4 NM Holding Pattern		VGSi and RNAV glidepath not coincident (VGSi Angle 3.00/TCH 40).		2300	JEKEK
CUYAT		HOREB		ULIRY	
6000 ← 337°		1800		2.1 NM to RW16	
2300 → 157°		1800		*1 NM to RW16	
GP 3.10°		*940		RW16	
TCH 55		7.2 NM		2.6 NM	
				1.1 NM	
				1 NM	
CATEGORY	A	B	C	D	
LPV DA		461-7/8	261 (300-7/8)		
LNAV/VNAV DA		468-7/8	268 (300-7/8)		
LNAV MDA		560-1	360 (400-1)		
◼ CIRCLING	720-1	520 (600-1)	1000-2 1/4 800 (800-2 1/4)	1000-2 1/2 800 (800-2 1/2)	



SE-4, 31 DEC 2020 to 28 JAN 2021

SE-4, 31 DEC 2020 to 28 JAN 2021