

APP CRS
011°

Rwy Idg **5000**
TDZE **65**
Apt Elev **65**

RNAV (GPS) RWY 1
INVERNESS (INF')

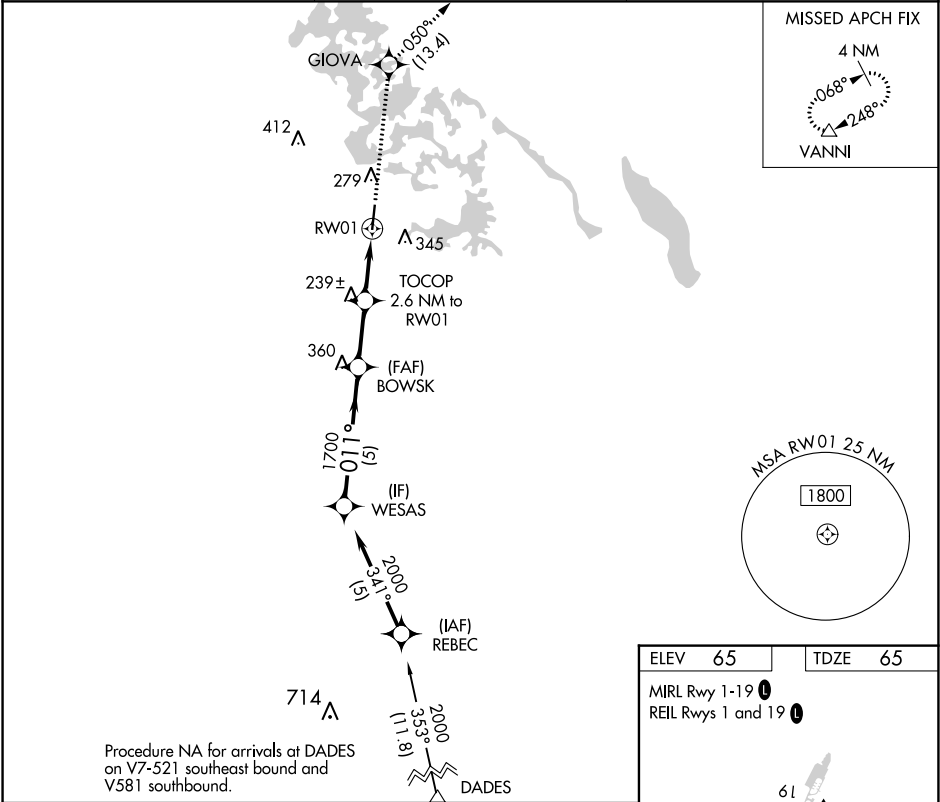
▼

▲

When local altimeter setting not received, use Ocala altimeter setting and increase all MDA 60 feet; and increase LNAV Cat C visibility ¼ mile and Circling Cat C visibility ¼ mile. DME/DME RNP-0.3 NA. Visibility reduction by helicopters NA. Procedure NA at night.

MISSED APPROACH: Climb to 2000 direct GIOVA and on track 050° to VANNI and hold.

AWOS-3 119.975	JACKSONVILLE APP CON 118.6 251.15	UNICOM 122.725 (CTAF) 0
--------------------------	---	-----------------------------------



WESAS

2000

011°

BOWSK

1700

3.00° TCH 47

940

RW01

5 NM

2.4 NM

2.6 NM

2000

GIOVA

tr 050°

VANNI

VGSI and descent angles not coincident (VGSI Angle 3.50/TCH 47).

VGSI

3.50°

TCH 47

CATEGORY	A	B	C	D
LNAV MDA	500-1 435 (500-1)	500-1¼ 435 (500-1¼)	500-1½ 435 (500-1½)	NA
CIRCLING	660-1 595 (600-1)	660-1½ 595 (600-1½)	660-2 595 (600-2)	NA

ELEV 65

TDZE 65

MIRL Rwy 1-19 0

REIL Rwy 1 and 19 0

61

0.5% UP

5000 X 75

011° to RW01