

APP CRS	Rwy Idg	3405
090°	TDZE	47
	Apt Elev	49

Rwy Idg	3405
TDZE	47
Apt Elev	49

Rwy lug	3403
TDZE	47

FDZL	47
Apt Elev	49

RNAV (GPS) RWY 9

ANTONIO RIVERA RODRIGUEZ (VQS)(TJVQ)



Use Luis Munoz Marin Intl altimeter setting.
DME/DME RNP-0.3 NA.
Circling NA south of Rwy 9-27.

DME/DME RNP-0.3 NA.

Circling NA south of Rwy 9-27.

MISSED APPROACH: Climbing left turn to 3000 direct MIXEE and hold.

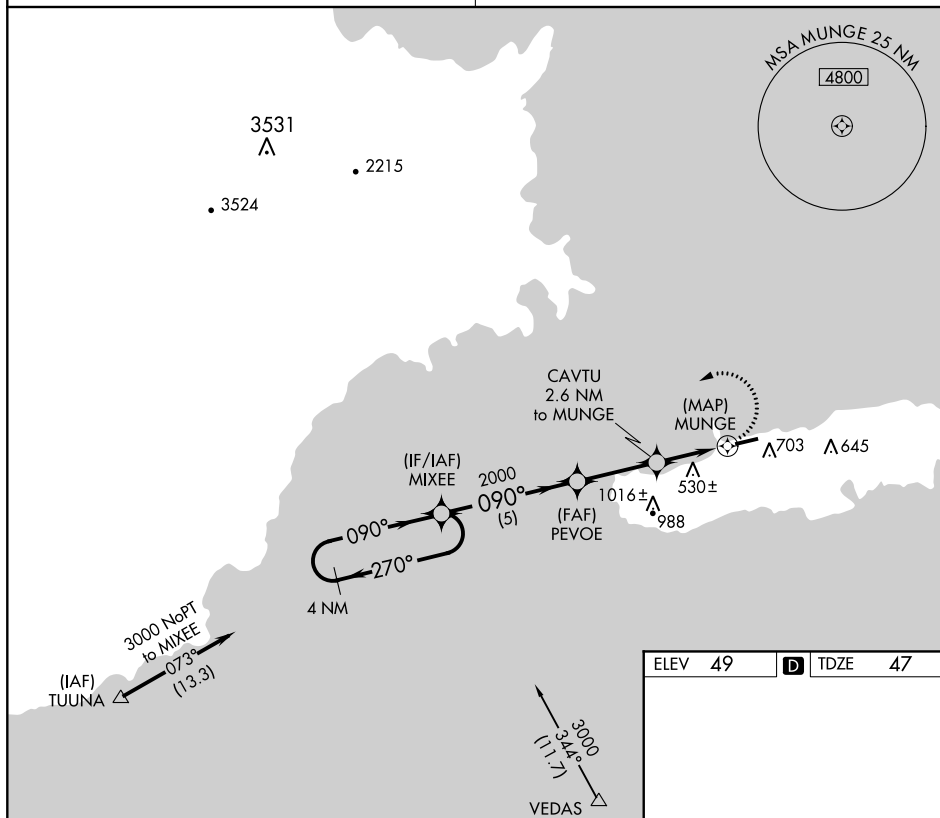
direct MIXEE and hold.

SAN JUAN CERAP APP CON

128.65 279.6

UN|COM

123.0 (CTAF)



ELEV	49	D	TDZE	47
------	----	---	------	----

Diagram illustrating a runway with a 0.5% UP slope. The runway is labeled 4301 X 75. A star is at the right end, and a circle with a minus sign is at the left end. A shadow of the runway is cast below it.

MIRL Rwy 9-27

4 NM Holding Pattern

MIXEE

PEVOE

CAVTU 2.6 NM to MUNGE

MUNGE

3000

2000

1140

5 NM

2.9 NM

2.6 NM

0.5 NM

3.23° TCH 30

3.00° TCH 46

VGS1 and descent angles not coincident.
(VGS1 Angle 3.00/TCH 46).

CATEGORY	A	B	C	D
LNAV MDA	880-1 833 (900-1)	880-1¼ 833 (900-1¼)	NA	
CIRCLING	1140-1¼ 1091 (1100-1¼)	1140-1½ 1091 (1100-1½)	NA	

MIRL Rwy 9-27