

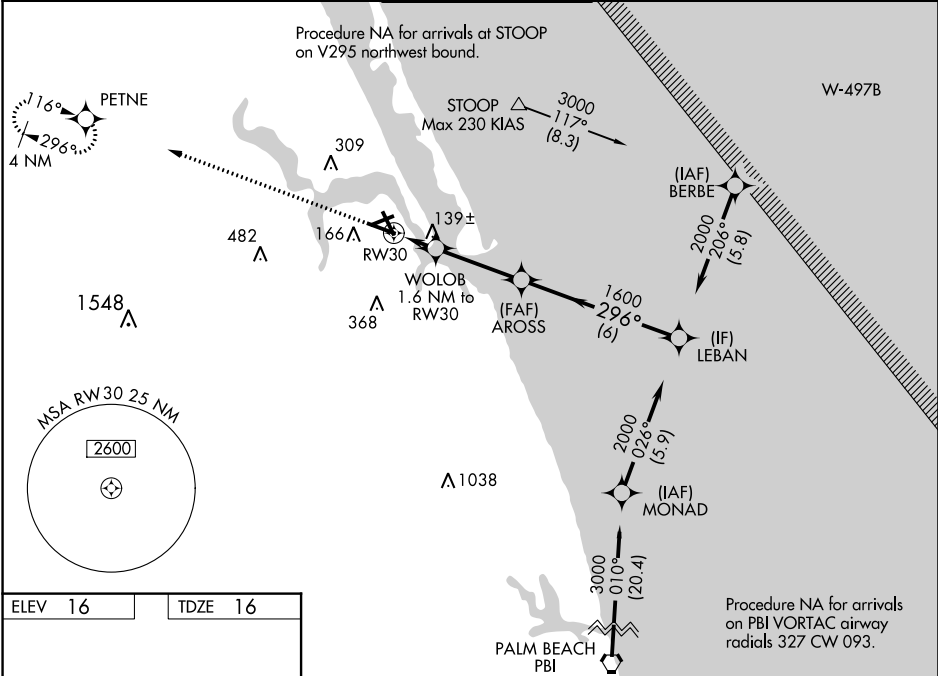
| | | |
|--|------------------------|---|
| WAAS CH 77716 W30A | APP CRS 296° | Rwy Idg 5828 TDZE 16 Apt Elev 16 |
|--|------------------------|---|

RNAV (GPS) RWY 30
WITHAM FIELD (SUA)

⚠ Circling for Rwy 07 NA at night. Baro-VNAV NA when using Palm Beach Intl altimeter setting. For uncompensated Baro-VNAV systems, LNAV/VNAV NA below 4°C (40°F) or above 54°C (130°F). DME/DME RNP-0.3 NA. Helicopter visibility reduction below ¾ SM NA. When local altimeter setting not received, use Palm Beach Intl altimeter setting and increase all DA 71 feet and all MDA 80 feet and increase LPV and LNAV/VNAV all Cats and LNAV Cats C/D visibility ¼ mile.

MISSED APPROACH: Climb to 2000 direct PETNE and hold.

| | | | | |
|------------------------|------------------------------------|---|-------------------------|----------------------------|
| ATIS 134.475 | PALM BEACH APP CON 132.8 | STUART TOWER★ 126.6 (CTAF) 0 | GND CON 121.7 | CLNC DEL 121.025 |
|------------------------|------------------------------------|---|-------------------------|----------------------------|



ELEV **16** TDZE **16**

REIL Rwy 12-30 **0**
MIRL Rwy 12-30 and 7-25 **0**

| | | | | | |
|---------------|---------------------------------|--|--|------------|-------------------|
| 2000 PETNE | | VGSi and RNAV glidepath not coincident (VGSi Angle 3.00/TCH 28). | | LEBAN | |
| *LNAV only. | | WOLOB 1.6 NM to RW30 | | AROSS 1600 | |
| RW30 | | *560 | | 2000 | |
| 1.6 NM | | 3.3 NM | | 6 NM | |
| CATEGORY | A | B | C | D | |
| LPV DA | 266-7 ⁸ | | 250 (300-7 ⁸) | | |
| LNAV/VNAV DA | 404-1 ³ ⁸ | | 388 (400-1 ³ ⁸) | | |
| LNAV MDA | 400-1 384 (400-1) | | 400-1 ¹ ⁸ 384 (400-1 ¹ ⁸) | | |
| CIRCLING | 480-1 464 (500-1) | | 480-1 ¹ ² 464 (500-1 ¹ ²) | | 580-2 564 (600-2) |

SE-3, 31 DEC 2020 to 28 JAN 2021

SE-3, 31 DEC 2020 to 28 JAN 2021