

WAAS CH 77802 W13A	APP CRS 135°	Rwy Idg 5500 TDZE 76 Apt Elev 76
--	------------------------	---

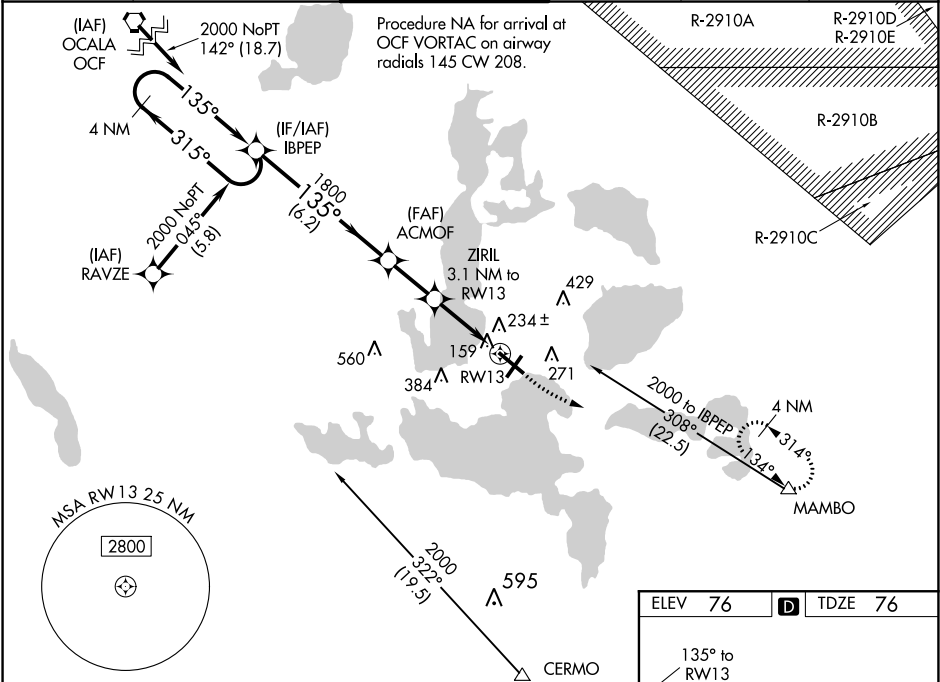
RNAV (GPS) RWY 13

LEESBURG INTL (LEE)

▼ Baro-VNAV NA when using Orlando Intl altimeter setting. For uncompensated Baro-VNAV systems, LNAV/VNAV NA below -15°C (5°F) or above 43°C (109°F). DME/DME RNP-0.3 NA. Helicopter visibility reduction below 1 SM NA. When local altimeter setting not received, use Orlando Intl altimeter setting and increase all DA 85 feet and all MDA 100 feet; increase LPV and LNAV/VNAV all Cats and LNAV and Circling Cat C and D visibility ¼ mile. When VGSI inop, Straight-in/Circling Rwy 13 procedure NA at night. When VGSI inop, Circling Rwy 3 and 21 NA at night.

MISSED APPROACH:
Climb to 600 then climbing left turn to 2000 direct MAMBO and hold.

ASOS 134.325	ORLANDO APP CON 135.3 351.9	LEESBURG TOWER ★ 119.35 (CTAF)	GND CON 121.725	GCO 121.725	UNICOM 122.725
------------------------	---------------------------------------	--	---------------------------	-----------------------	--------------------------



4 NM Holding Pattern		VGSI and RNAV glidepath not coincident (VGSI Angle 3.00/TCH 45).		600	2000	MAMBO
2000 ← 315° / 135° →		135°		ACMOF 1800	ZIRIL 3.1 NM to RWY 13	*LNAV only.
GP 3.00° TCH 55		1800		*1100	RWY 13	
		6.2 NM		2.2 NM	3.1 NM	
CATEGORY	A	B	C	D		
LPV DA	362-1		286 (300-1)			
LNAV/VNAV DA	417-1 1/8		341 (400-1 1/8)			
LNAV MDA	500-1	424 (500-1)	500-1 1/4	424 (500-1 1/4)		
CIRCLING	700-1	624 (700-1)	700-1 3/4 624 (700-1 3/4)	700-2 624 (700-2)		

