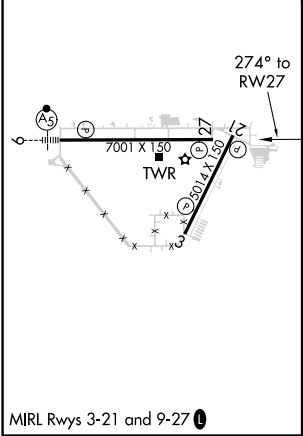
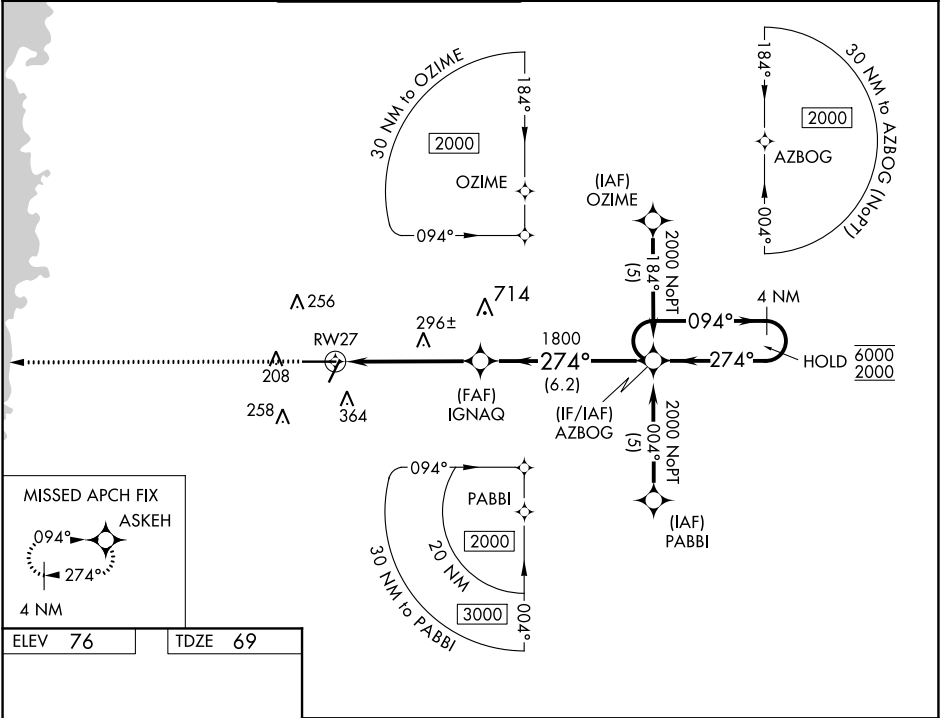


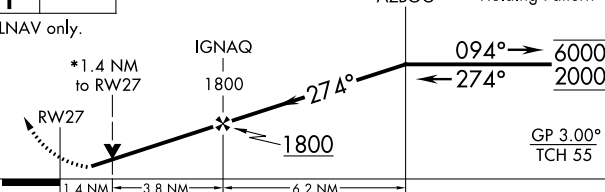


WAAS CH 86408 W27A	APP CRS 274°	Rwy ldg TDZE 69 Apt Elev 76
--	------------------------	---

RNAV (GPS) RWY 27
BROOKSVILLE-TAMPA BAY RGNL (BKV)

RNP APCH.		MISSED APPROACH: Climb to 2000 direct ASKEH and hold.			
▼ Rwy 27 helicopter visibility reduction below ¾ SM NA. For uncompensated Baro-VNAV systems, LNAV/VNAV NA below -15°C or above 48°C.					
ASOS 134.725	TAMPA APP CON 125.3 316.05	BROOKSVILLE TOWER ★ 118.55 (CTAF) 0	GND CON 121.4	CLNC DEL 119.125	UNICOM 123.0



2000	ASKEH	VGSI and RNAV glidepath not coincident (VGSI Angle 3.00/TCH 57).			
					
* LNAV only.					
					
CATEGORY	A		B	C	D
LPV DA	442-1¼ 373 (400-1¼)				
LNAV/ VNAV	595-1¾ 526 (600-1¾)				
LNAV MDA	620-1	551 (600-1)	620-1½ 551 (600-1½)	620-1¾ 551 (600-1¾)	

SE-3, 31 DEC 2020 to 28 JAN 2021

SE-3, 31 DEC 2020 to 28 JAN 2021